

## DINING HIGHLIGHTS

### Pinnacle Grill

Steak and seafood with a focus on fresh, regional offerings.

Dial 88 for reservations.



## TONIGHT IN THE DINING ROOM



### Indonesian Seafood Spring Roll

shrimp, crab, sweet chili sauce



### Indonesian Nasi Goreng

shrimp sate, ayam goreng, babi kecap

## HOURS

### Restaurants

#### Dining Room

Cruising Classics  
7:30am - 9:00am  
5:00pm - 9:00pm  
Deck 4, aft

#### Canaletto \$

Fresh Italian Pasta  
5:00pm - 9:30pm  
Deck 8, mid-ship

#### Pinnacle Grill \$

Steak & Seafood  
5:00pm - 9:30pm  
Deck 4, mid-ship

#### Lido Market

Casual Dining  
6:30am - 10:00am  
11:30am - 2:00pm  
2:00pm - 4:00pm\*  
5:30pm - 8:00pm  
10:30pm - 11:30pm\*  
Deck 8, mid-ship & aft

#### Dive-In

Burgers & Hot Dogs  
11:30am - 6:00pm  
Deck 8, forward

\$ cover charges apply \* select stations available

## HOURS

### Cafés & Bars *A full list of bar hours is available on Navigator*

<b>Crow's Nest Café</b>	3:00pm - 12:00am	Deck 9, forward
<b>Library Café</b>	6:00am - 9:00pm	Deck 5, aft
<b>MIX</b>	4:00pm - close	Deck 5, mid-ship
<b>Lido Bar</b>	7:00am - 9:00pm	Deck 8, mid-ship
<b>Ocean Bar</b>	10:00am - 12:00am	Deck 5, forward
<b>Sea View Bar</b>	9:00am - 11:30pm	Deck 8, aft

50% Happy Hour: all cocktails, wine by the glass, beers and house spirits under \$12.

4:00pm - 5:00pm & 6:30pm - 7:30pm, Crow's Nest, 9

4:00pm - 5:00pm & 6:30pm - 7:30pm, Ocean Bar, 5

4:00pm - 5:00pm & 6:30pm - 7:30pm, Sea View Bar, 8

Guests ages 21+ are welcome to purchase and consume alcoholic beverages. Proper identification is required, and guests will be asked to verify their age.

### Recreation

<b>Casino</b>	Reopens tomorrow	Deck 5, mid-ship
<b>Fitness Center</b>	6:00am - 9:00pm	Deck 8, forward
<b>Hot Tubs</b>	9:00am - 9:00pm	Deck 8
<b>Pools</b>	7:00am - 9:00pm Lido 7:00am - 7:00pm Sea View	Deck 8
<b>Spa &amp; Salon</b>	8:00am - 10:00pm	Deck 8, forward

### Services

<b>Dining Reservations</b>	24 hours - Dial 88	Deck 4, mid-ship
<b>Future Cruises</b>	9:00am - 12:00pm	Deck 5, aft
<b>Guest Services</b>	24 hours - Dial 90	Deck 4, forward
<b>Medical Center</b>	8:00am - 10:00am 4:00pm - 6:00pm Dial 3200 or 90 for consultations Dial 911 for emergencies	Deck 1, forward
<b>Room Service</b>	24 hours - Dial 92	
<b>Shore Excursions</b>	8:00am - 10:00am	Deck 4, mid-ship

### Shopping

<b>EFFY Jewelry</b>	Reopens tomorrow	Deck 5, mid-ship
<b>Photo Shop</b>	5:00pm - 10:00pm	Deck 4, forward
<b>The Shops</b>	Reopens tomorrow	Decks 4 & 5



Friday, March 20, 2026 • Benoa (Bali), Indonesia

**Arrival**  
9:00AM

**Tonight's Attire**  
Casual

**All Aboard**  
March 21, 2026  
4:30PM

## Going Ashore in Indonesia

The Indonesian government requires everyone going ashore to carry a digital or printed copy of the All Indonesia QR code. Kindly refer to the letter delivered to your stateroom with more information about the All Indonesia QR code.

Please also remember to carry your stateroom keycard and a government issued photo ID.

## Today's Highlights

### Stretch & Release

7:00am Lido Poolside, 8

Enjoy this 25-minute class that covers all your major muscle groups with a series of stretches to help you feel strong, flexible and grounded.



### Coloring for Adults

9:30am & 3:30pm Art Studio, 5

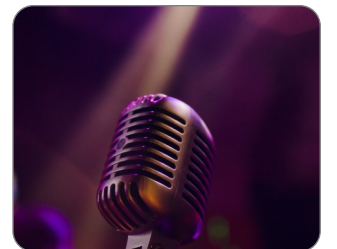
Featuring images created exclusively for Holland America.



### Music Trivia: Pop

6:30pm MIX, 5

Getting a perfect score is harder than you think!



VOLENDAM  
**GRAND**  
WORLD VOYAGE

## TODAY'S ACTIVITIES & PROMOTIONS

7:00am	<b>Stretch &amp; Release</b>	Lido Poolside, 8
7:30am	<b>Abs Class</b>	Lido Poolside, 8
8:00am	<b>Tai Chi for Everyone</b>	Lido Poolside, 8
8:30am	<b>Origami Folding: Crane</b>	Art Studio, 5
9:00am	<b>Volendam Arrives in Benoa</b>	
9:00am	Benoa Photo Opportunity <span>PROMOTION</span>	Pier Ashore
9:00am	<b>Soccer Goal Scoring Competition</b>	Sport Court, 9
9:30am	<b>Ask Your Travel Guide</b> <span>LOCAL</span>	Pier Ashore
9:30am	<b>Coloring for Adults</b>	Art Studio, 5
10:00am	Party Bridge Play until 12:00pm Hudson Room, 5	
10:00am	Mahjong Players Meet until 1:00pm Explorer's Lounge, 5	
10:00am	<b>Basketball Knockout</b>	Sport Court, 9
1:00pm	Party Bridge Play until 4:00pm Hudson Room, 5	
1:00pm	<b>Lightning Trivia</b>	MIX, 5
2:00pm	Today's Movie: Eat Pray Love <span>MOVIE</span>	Wajang Theater, 4
3:00pm	<b>A Pickup Game of Pickleball</b>	Sport Court, 9
3:30pm	<b>Coloring for Adults</b>	Art Studio, 5
4:00pm	<b>Team Trivia Challenge</b>	Crow's Nest, 9
4:00pm	<b>Let's Play Ladder Ball</b>	Sport Court, 9
4:30pm	<b>Friends of Bill W. Meet</b>	Hudson Room, 5
4:30pm	<b>Origami Folding: Crane</b>	Art Studio, 5
5:00pm	Have Your Casual Portrait Taken <span>PROMOTION</span>	Atrium, 5
5:00pm	<b>Evening Catholic Prayer</b>	Wajang Theater, 4

5:00pm	<b>Evening Stretch</b>	Fitness Center, 8
6:00pm	<b>Shabbat Service</b>	Hudson Room, 5
6:30pm	<b>Music Trivia: Pop</b>	MIX, 5
7:30pm	<b>On World Stage: The Spirit of Bali</b>	World Stage, 4 & 5
8:30pm	<b>Meet for a Game of Backgammon</b>	Library Café, 5
8:30pm	Today's Movie: Eat Pray Love <span>MOVIE</span>	Wajang Theater, 4
9:00pm	<b>On World Stage: The Spirit of Bali</b>	World Stage, 4 & 5

## TODAY ON WORLD STAGE *Decks 4 & 5, forward*

7:30pm & 9:00pm



### Traditional Music & Dance: THE SPIRIT OF BALI

Let's join our talented group of musicians and dancers from Bali as they bring the island's rich culture and traditions to life. Through mesmerizing performances, graceful movements, and stunning traditional costumes, they beautifully showcase the spirit and heritage of Bali.

## TODAY'S MOVIE *Wajang Theater, 4*

2:00pm & 8:30pm



### Eat Pray Love

Drama, Rated PG-13, 2 hours 21 minutes

A recent divorcee leaves her comfortable life behind to travel to Italy, India and Bali. At each destination she discovers a new aspect of leading a happier life, including prayer, nourishment, love and balance.

## LIVE MUSIC

<b>The Dam Band</b> 8:15pm 9:15pm 10:15pm	<b>Piano Bar Entertainer Grace</b> 7:45pm 8:45pm 9:45pm	<b>Solo Guitarist Shelly</b> 5:00pm 6:00pm 7:00pm