

## DINING HIGHLIGHTS

### Indonesian Afternoon Tea

3:00pm - 3:45pm Dining Room, 5

Join us for a special Indonesian themed tea in the Dining Room this afternoon.



## TONIGHT IN THE DINING ROOM

### Seafood Croquette

ravigotte dip

### Fresh Saddle Tail Snapper Fillet

golden curry, spiced orange marmalade, broccoli

## HOURS

### Restaurants

#### Dining Room

Cruising Classics  
8:00am - 9:30am  
5:00pm - 9:00pm  
Deck 4, aft

#### Canaletto \$

Fresh Italian Pasta  
5:00pm - 9:30pm  
Deck 8, mid-ship

#### Pinnacle Grill \$

Steak & Seafood  
12:00pm - 1:00pm  
5:00pm - 9:30pm  
Deck 4, mid-ship

#### Lido Market

Casual Dining  
7:00am - 10:30am  
11:30am - 2:00pm  
2:00pm - 4:00pm\*  
5:30pm - 8:00pm  
10:30pm - 11:30pm\*  
Deck 8, mid-ship & aft

#### Dive-In

Burgers & Hot Dogs  
11:30am - 6:00pm  
Deck 8, forward

\$ cover charges apply \* select stations available

## HOURS

### Cafés & Bars *A full list of bar hours is available on Navigator*

<b>Crow's Nest Café</b>	9:00am - 12:00am	Deck 9, forward
<b>Library Café</b>	6:00am - 9:00pm	Deck 5, aft
<b>MIX</b>	9:00am - close	Deck 5, mid-ship
<b>Lido Bar</b>	7:00am - 9:00pm	Deck 8, mid-ship
<b>Ocean Bar</b>	10:00am - 12:00am	Deck 5, forward
<b>Sea View Bar</b>	8:00am - 11:30pm	Deck 8, aft

*50% Happy Hour: all cocktails, wine by the glass, beers and house spirits under \$12.*

*4:00pm - 5:00pm & 6:30pm - 7:30pm, Crow's Nest, 9*

*4:00pm - 5:00pm & 6:30pm - 7:30pm, Ocean Bar, 5*

*4:00pm - 5:00pm & 6:30pm - 7:30pm, Sea View Bar, 8*

*Guests ages 21+ are welcome to purchase and consume alcoholic beverages.*

*Proper identification is required, and guests will be asked to verify their age.*

## Recreation

<b>Casino</b>	9:00am - late <i>Cashier</i> 10:00am - late <i>Tables</i> 24 hours <i>Slots</i>	Deck 5, mid-ship
<b>Fitness Center</b>	6:00am - 9:00pm	Deck 8, forward
<b>Hot Tubs</b>	9:00am - 9:00pm	Deck 8
<b>Pools</b>	7:00am - 9:00pm <i>Lido</i> 7:00am - 7:00pm <i>Sea View</i>	Deck 8
<b>Spa &amp; Salon</b>	8:00am - 10:00pm	Deck 8, forward

## Services

<b>Dining Reservations</b>	24 hours - Dial 88	
<b>Future Cruises</b>	9:00am - 12:00pm 2:00pm - 5:00pm	Deck 5, aft
<b>Guest Services</b>	24 hours - Dial 90	
<b>Medical Center</b>	8:00am - 11:00am 3:00pm - 6:00pm Dial 3200 or 90 for consultations Dial 911 for emergencies	Deck 1, forward
<b>Room Service</b>	24 hours - Dial 92	
<b>Shore Excursions</b>	9:00am - 12:00pm 2:00pm - 5:00pm	Deck 4, mid-ship

## Shopping

<b>EFFY Jewelry</b>	10:00am - 10:00pm	Deck 5, mid-ship
<b>Photo Shop</b>	9:00am - 10:00pm	Deck 4, forward
<b>The Shops</b>	10:00am - 10:00pm	Decks 4 & 5



Wednesday, March 18, 2026 • At Sea

### Tonight's Attire

Casual

## On Deck for a Cause

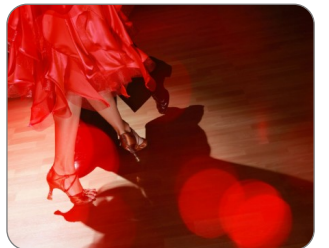
Join us in supporting Direct Relief, a humanitarian aid organization, by participating in On Deck for a Cause®, a 5K fundraising walk. For your participation and a \$25 donation to the Holland America Line Foundation, you will receive an exclusive On Deck for a Cause® T-shirt and wristband. Register at Guest Services before the walk on March 23rd.

## Today's Highlights

### Latin & Ballroom Instruction

10:00am & 3:00pm Crow's Nest, 9

A fun, beginner-friendly class that teaches the basic steps of popular ballroom dances. No experience or partner needed.



### Cooking Show with Captain Rens

1:00pm Wajang Theater, 4

Join Cruise Director Erin and Captain Rens as he prepares a Dutch Apple Pie.



### Slawi Bay (Komodo) Q&A

7:00pm World Stage, 4 & 5

Ask your Travel Guide about our upcoming port of call.



VOLENDAM  
**GRAND**  
WORLD VOYAGE

## TODAY'S ACTIVITIES & PROMOTIONS

2:00am	Ship's Clocks are Set 1 Hour Back	
7:00am	<b>Stretch &amp; Release</b>	Lido Poolside, 8
7:30am	<b>Abs Class</b>	Lido Poolside, 8
8:00am	<b>Morning Catholic Prayer</b>	Wajang Theater, 4
8:00am	<b>Sit &amp; Knit with Project Linus</b> until 11:00am	Ocean Bar, 5
8:00am	<b>Tai Chi for Everyone</b>	Lido Poolside, 8
9:00am	<b>Tech for Travelers: Bali Made Easy: Helpful Apps for the Port</b>	Wajang Theater, 4
9:00am	<b>Interdenominational Gathering</b>	Explorer's Lounge, 5
9:00am	<b>Ask Your Travel Guide</b> LOCAL	Travel Guide Desk, 4
9:00am	<b>Tour de Cycle \$20</b>	Fitness Center, 8
9:00am	<b>Pickleball Instruction: Scoring</b>	Sport Court, 9
9:30am	<b>Watercoloring: Singapore Orchid (Purple)</b>	Art Studio, 5
10:00am	<b>Topics with Rabbi Elliot</b>	Explorer's Lounge, 5
10:00am	<b>Bridge Instruction for Beginners</b>	King's Room, 5
10:00am	<b>Mahjong Players Meet</b> until 1:00pm	Explorer's Lounge, 5
10:00am	<b>Latin &amp; Ballroom Instruction</b>	Crow's Nest, 9
10:00am	<b>Pickleball Tournament</b>	Sport Court, 9
10:30am	<i>Natural Relief for Arthritis, Back and Knee Pain</i> PROMOTION	Greenhouse Spa, 8
10:30am	<i>Merabella Mimosas Mornings with EFFY</i> PROMOTION	EFFY Jewelry, 5
11:00am	<b>Intermediate Bridge Instruction</b>	King's Room, 5
11:00am	<b>Drawing Class</b>	Wajang Theater, 4
11:00am	<b>Walk a Mile</b>	Atrium, 3
11:00am	<b>Learn to Line Dance</b>	Crow's Nest, 9
1:00pm	<b>Tech for Travelers: Q&amp;A</b>	Wajang Desk, 4
1:00pm	<b>Cooking Show with Captain Rens</b>	Wajang Theater, 4
1:00pm	<b>Today's Trivia: Indonesia</b>	MIX, 5
1:00pm	<b>Bali: Sacred Living Culture</b> by George Sranko	World Stage, 4 & 5
1:30pm	<b>Watercoloring: Singapore Orchid (Purple)</b>	Art Studio, 5
1:30pm	<b>Duplicate Bridge Play</b>	Hudson Room, 5
2:00pm	<b>Tech for Travelers: Bali Made Easy: Helpful Apps for the Port</b>	Wajang Theater, 4
2:00pm	<b>438 Days Adrift</b> by Brian Beck	World Stage, 4 & 5

2:00pm	<b>Let's Play Ladder Ball</b>	Lido Poolside, 8
2:00pm	<i>Birthstone Seminar</i> PROMOTION	MIX, 5
2:30pm	<b>Craft Workshop: Cross Stitch Keychain (Blue)</b>	Lido Market, 8
3:00pm	<b>Latin &amp; Ballroom Instruction</b>	Crow's Nest, 9
3:00pm	<b>Over \$600 Jackpot Bingo</b> Tickets on Sale at 2:00pm	MIX, 5
3:00pm	<b>Today's Movie: Song Sung Blue</b> MOVIE	Wajang Theater, 4
3:00pm	<b>Cornhole Tournament</b>	Sport Court, 9
3:00pm	<b>Meet for a Game of Chess</b>	Library Café, 5
3:00pm	<b>Ask Your Travel Guide</b> LOCAL	Travel Guide Desk, 4
3:00pm	<b>Indonesian Afternoon Tea</b>	Dining Room, 5
3:30pm	<b>Watercoloring: Singapore Orchid (Purple)</b>	Art Studio, 5
4:00pm	<b>Team Trivia Challenge</b>	Crow's Nest, 9
4:00pm	<b>A Pickup Game of Pickleball</b>	Sport Court, 9
4:30pm	<b>Friends of Bill W. Meet</b>	Hudson Room, 5
5:00pm	<i>Luxury Watches Under \$500</i> PROMOTION	The Shops, 5
5:00pm	<b>Evening Stretch</b>	Fitness Center, 8
5:00pm	<i>Have Your Casual Portrait Taken</i> PROMOTION	Atrium, 5
6:00pm	<i>Complimentary Footprint Analysis</i> PROMOTION	Greenhouse Spa, 8
6:30pm	<b>Music Trivia: The Beatles</b>	MIX, 5
7:00pm	<i>Exotic Sapphire Collection Showcase</i> PROMOTION	EFFY Jewelry, 5
7:00pm	<b>Slawi Bay (Komodo) Q&amp;A</b> LOCAL	World Stage, 4 & 5
7:30pm	<b>On World Stage: Nyree Huyser</b>	World Stage, 4 & 5
8:00pm	<i>Scratch Off Tickets on Sale</i> PROMOTION	Casino, 5
8:30pm	<b>Meet for a Game of Life</b>	Library Café, 5
8:30pm	<b>Today's Movie: Song Sung Blue</b> MOVIE	Wajang Theater, 4
9:00pm	<b>On World Stage: Nyree Huyser</b>	World Stage, 4 & 5
10:00pm	<i>Over \$617,000 Paradise Lotto Jackpot Drawing</i> PROMOTION	Casino, 5

## TODAY'S MOVIE *Wajang Theater, 4*

3:00pm & 8:30pm



**Song Sung Blue**  
Musical, Rated PG-13, 2 hours 12 minutes  
A Milwaukee Neil Diamond tribute duo rises to fame while weathering heartbreaking loss.

## TODAY ON WORLD STAGE *Decks 4 & 5, forward*

1:00pm		<b>Bali: Sacred Living Culture</b> By George Sranko.
2:00pm		<b>438 Days Adrift</b> By Brian Beck.
7:00pm	LOCAL	<b>Slawi Bay (Komodo) Q&amp;A</b> Ask your Travel Guide about our upcoming port of call.
7:30pm & 9:00pm		<b>Vocalist NYREE HUYSER</b> "Hollywood Glamour" A selection of some of the most famous songs of the big screen.

## LIVE MUSIC

<b>Explorer's Lounge</b>	<b>OCEAN BAR</b>
Vivace 2:30pm, 4:00pm, 6:30pm	Piano Bar Entertainer Grace 4:00pm
<b>OCEAN BAR</b>	<b>MIX</b>
The Dam Band 6:45pm, 8:15pm, 9:15pm, 10:15pm	Piano Bar Entertainer Grace 7:45pm, 8:45pm, 9:45pm