

## DINING HIGHLIGHTS

### Canaletto

Fresh-made Italian pasta.

Dial 88 for reservations.



## TONIGHT IN THE DINING ROOM



### Australian Snow-Crab Louie Salad

boiled egg, tomato, asparagus



### Australian Fresh Barramundi Fillet

red curry sauce, jasmine rice, butternut squash, broccoli

## HOURS

### Restaurants

#### Dining Room

Cruising Classics  
7:30am - 9:00am  
5:00pm - 9:00pm  
Deck 4, aft

#### Canaletto \$

Fresh Italian Pasta  
5:00pm - 9:30pm  
Deck 8, mid-ship

#### Pinnacle Grill \$

Steak & Seafood  
5:00pm - 9:30pm  
Deck 4, mid-ship

#### Lido Market

Casual Dining  
6:30am - 10:00am  
11:30am - 2:00pm  
3:00pm - 4:00pm\*  
5:30pm - 8:00pm  
10:30pm - 11:30pm\*  
Deck 8, mid-ship & aft

#### Dive-In

Burgers & Hot Dogs  
11:30am - 6:00pm  
Deck 8, forward

\$ cover charges apply \* select stations available

## HOURS

### Cafés & Bars *A full list of bar hours is available on Navigator*

<b>Crow's Nest Café</b>	3:00pm - 12:00am	Deck 9, forward
<b>Library Café</b>	6:00am - 9:00pm	Deck 5, aft
<b>MIX</b>	4:00pm - close	Deck 5, mid-ship
<b>Lido Bar</b>	7:00am - 9:00pm	Deck 8, mid-ship
<b>Ocean Bar</b>	10:00am - 12:00am	Deck 5, forward
<b>Sea View Bar</b>	9:00am - 11:30pm	Deck 8, aft

50% Happy Hour: all cocktails, wine by the glass, beers and house spirits under \$12.

4:00pm - 5:00pm & 6:30pm - 7:30pm, Crow's Nest, 9

4:00pm - 5:00pm & 6:30pm - 7:30pm, Ocean Bar, 5

4:00pm - 5:00pm & 6:30pm - 7:30pm, Sea View Bar, 8

Guests ages 21+ are welcome to purchase and consume alcoholic beverages. Proper identification is required, and guests will be asked to verify their age.

### Recreation

<b>Casino</b>	10:30pm - late Slots	Deck 5, mid-ship
<b>Fitness Center</b>	6:00am - 9:00pm	Deck 8, forward
<b>Hot Tubs</b>	9:00am - 9:00pm	Deck 8
<b>Pools</b>	7:00am - 9:00pm Lido 7:00am - 7:00pm Sea View	Deck 8
<b>Spa &amp; Salon</b>	8:00am - 10:00pm	Deck 8, forward

### Services

<b>Dining Reservations</b>	24 hours - Dial 88	Deck 4, mid-ship
<b>Future Cruises</b>	8:00am - 11:00am	Deck 5, aft
<b>Guest Services</b>	24 hours - Dial 90	Deck 4, forward
<b>Medical Center</b>	8:00am - 10:00am 4:00pm - 6:00pm Dial 3200 or 90 for consultations Dial 911 for emergencies	Deck 1, forward
<b>Room Service</b>	24 hours - Dial 92	
<b>Shore Excursions</b>	7:00am - 8:00am 5:00pm - 7:00pm	Deck 4, mid-ship

### Shopping

<b>EFFY Jewelry</b>	6:30pm - 10:00pm	Deck 5, mid-ship
<b>Photo Shop</b>	5:00pm - 10:00pm	Deck 4, forward
<b>The Shops</b>	6:30pm - 10:00pm	Decks 4 & 5



Monday, March 16, 2026 • Darwin, Australia

**Arrival**  
8:00AM

**Tonight's Attire**  
Casual

**All Aboard**  
5:30PM

## Port Shuttle Service

Today, we will provide a complimentary shuttle service to the Top End Visitor Information Centre (city center). Shuttles will run continuously throughout the day. The last shuttle will depart the Top End Visitor Information at 5:15pm.

When going ashore, please remember to carry your stateroom keycard and a government issued photo ID.

## Tourist Refund Scheme (Tax Refund)

Australian Border Force Representatives will be in Explorer's Lounge, 5 today to process tax refunds from 3:45pm until 5:15pm. Please refer to the letter delivered to your stateroom for more information.

## Today's Highlights

### Origami Folding: Bear

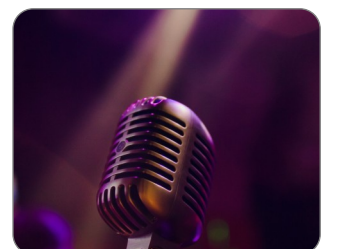
8:30am & 4:30pm Art Studio, 5  
For all skill levels.



### It's Karaoke Time!

9:00pm Crow's Nest, 9

Whether you're pitch perfect or fabulously flat, all are welcome to join in the fun.



VOLENDAM  
**GRAND**  
WORLD VOYAGE

## TODAY'S ACTIVITIES & PROMOTIONS

7:00am	Stretch & Release	Lido Poolside, 8
7:30am	Abs Class	Lido Poolside, 8
8:00am	<b>Volendam Arrives in Darwin</b>	
8:00am	Darwin Photo Opportunity <b>PROMOTION</b>	Pier Ashore
8:00am	Tai Chi for Everyone	Lido Poolside, 8
8:30am	Ask Your Travel Guide <b>LOCAL</b>	Pier Ashore
8:30am	Origami Folding: Bear	Art Studio, 5
9:00am	Around the World Basketball	Sport Court, 9
9:30am	Modern Calligraphy	Art Studio, 5
10:00am	Party Bridge Play until 12:00pm	Hudson Room, 5
10:00am	Mahjong Players Meet until 1:00pm	Explorer's Lounge, 5
10:00am	Golf Putting	Sport Court, 9
1:00pm	Party Bridge Play until 4:00pm	Hudson Room, 5
1:00pm	Lightning Trivia	MIX, 5
2:00pm	Today's Movie: Muriel's Wedding <b>MOVIE</b>	Wajang Theater, 4
3:00pm	A Pickup Game of Pickleball	Sport Court, 9
3:30pm	Modern Calligraphy	Art Studio, 5
4:00pm	Shuffleboard Challenge	Sport Court, 9
4:00pm	Team Trivia Challenge	Crow's Nest, 9
4:00pm	Tech for Travelers: Q&A	Wajang Desk, 4
4:30pm	Friends of Bill W. Meet	Hudson Room, 5
4:30pm	Origami Folding: Bear	Art Studio, 5
5:00pm	Ask Your Travel Guide	Travel Guide Desk, 4

5:00pm	Evening Catholic Prayer	Wajang Theater, 4
5:00pm	Evening Stretch	Fitness Center, 8
5:00pm	Have Your Casual Portrait Taken <b>PROMOTION</b>	Atrium, 5
5:30pm	<b>All Aboard as Volendam Departs Darwin</b>	
6:30pm	Music Trivia: Instrumentals	MIX, 5
6:30pm	Eco-Drive Watch Extravaganza <b>PROMOTION</b>	The Shops, 5
7:00pm	King of Color: Watercolors Event <b>PROMOTION</b>	EFFY Jewelry, 5
7:30pm	On World Stage: Nyree Huyser	World Stage, 4 & 5
7:30pm	ViaMar Fashion Rings: 3 for \$55 <b>PROMOTION</b>	The Shops, 5
8:30pm	Meet for a Game of Phase 10	Library Café, 5
8:30pm	Today's Movie: Muriel's Wedding <b>MOVIE</b>	Wajang Theater, 4
9:00pm	On World Stage: Nyree Huyser	World Stage, 4 & 5
9:00pm	It's Karaoke Time!	Crow's Nest, 9

## TODAY ON WORLD STAGE *Decks 4 & 5, forward*

7:30pm & 9:00pm



Vocalist  
**NYREE HUYSER**

"The Power of Céline"

A tribute to the greatest hits of Céline Dion.

## TODAY'S MOVIE *Wajang Theater, 4*

3:00pm & 8:30pm



**Muriel's Wedding**

*Dark Comedy, Rated R, 1 hour 46 minutes*

A young social outcast in Australia steals money from her parents to finance a vacation where she hopes to find happiness, and perhaps love.

## LIVE MUSIC

Explorer's Lounge

Vivace

4:00pm, 6:30pm, 8:30pm

OCEAN  
BAR

Solo Guitarist Shelly

5:00pm, 6:00pm, 7:00pm

OCEAN  
BAR

The Dam Band

8:15pm, 9:15pm, 10:15pm

MIX

Piano Bar Entertainer Grace

7:45pm, 8:45pm, 9:45pm