

## DINING HIGHLIGHTS

### Welcome Aboard Steak Dinner

5:30pm - 8:00pm *Lido Market, 8*

Featuring a variety of classic side dishes and desserts.



## TONIGHT IN THE DINING ROOM

### Peaches, Prosciutto, Mint

maple syrup, lime



### Australian Fresh Barramundi Fillet

fried caper slaw, green beans, lemon-dill aioli

## HOURS

### Restaurants

#### Dining Room

Cruising Classics  
7:30am - 9:00am  
5:00pm - 9:00pm  
*Deck 4, aft*

#### Canaletto \$

Fresh Italian Pasta  
5:00pm - 9:30pm  
*Deck 8, mid-ship*

#### Pinnacle Grill \$

Steak & Seafood  
5:00pm - 9:30pm  
*Deck 4, mid-ship*

#### Lido Market

Casual Dining  
6:00am - 10:00am  
11:00am - 3:00pm  
3:00pm - 4:00pm\*  
5:30pm - 8:00pm  
10:30pm - 11:30pm\*  
*Deck 8, mid-ship & aft*

#### Dive-In

Burgers & Hot Dogs  
11:30am - 6:00pm  
*Deck 8, forward*

\$ cover charges apply \* select stations available

## HOURS

### Cafés & Bars *A full list of bar hours is available on Navigator*

<b>Crow's Nest Café</b>	3:00pm - 12:00am	<i>Deck 9, forward</i>
<b>Library Café</b>	6:00am - 9:00pm	<i>Deck 5, aft</i>
<b>MIX</b>	4:00pm - close	<i>Deck 5, mid-ship</i>
<b>Lido Bar</b>	7:00am - 9:00pm	<i>Deck 8, mid-ship</i>
<b>Ocean Bar</b>	10:00am - 12:00am	<i>Deck 5, forward</i>
<b>Sea View Bar</b>	9:00am - 11:30pm	<i>Deck 8, aft</i>

*50% Happy Hour: all cocktails, wine by the glass, beers and house spirits under \$12.*

*4:00pm - 5:00pm & 6:30pm - 7:30pm, Crow's Nest, 9*

*4:00pm - 5:00pm & 6:30pm - 7:30pm, Ocean Bar, 5*

*4:00pm - 5:00pm & 6:30pm - 7:30pm, Sea View Bar, 8*

*Guests ages 21+ are welcome to purchase and consume alcoholic beverages. Proper identification is required, and guests will be asked to verify their age.*

### Recreation

<b>Casino</b>	Reopens tomorrow	<i>Deck 5, mid-ship</i>
<b>Fitness Center</b>	6:00am - 9:00pm	<i>Deck 8, forward</i>
<b>Hot Tubs</b>	9:00am - 9:00pm	<i>Deck 8</i>
<b>Pools</b>	7:00am - 9:00pm <i>Lido</i> 7:00am - 7:00pm <i>Sea View</i>	<i>Deck 8</i>
<b>Spa &amp; Salon</b>	8:00am - 10:00pm	<i>Deck 8, forward</i>

### Services

<b>Dining Reservations</b>	24 hours - Dial 88	<i>Deck 4, mid-ship</i>
<b>Future Cruises</b>	8:00am - 11:00am	<i>Deck 5, aft</i>
<b>Guest Services</b>	24 hours - Dial 90	<i>Deck 4, forward</i>
<b>Medical Center</b>	8:00am - 10:00am 4:00pm - 6:00pm Dial 3200 or 90 for consultations <i>Dial 911 for emergencies</i>	<i>Deck 1, forward</i>
<b>Room Service</b>	24 hours - Dial 92	
<b>Shore Excursions</b>	2:00pm - 6:00pm	<i>Deck 4, mid-ship</i>

### Shopping

<b>EFFY Jewelry</b>	Reopens tomorrow	<i>Deck 5, mid-ship</i>
<b>Photo Shop</b>	5:00pm - 10:00pm	<i>Deck 4, forward</i>
<b>The Shops</b>	Reopens tomorrow	<i>Decks 4 &amp; 5</i>



Saturday, March 7, 2026 • Sydney, Australia

**Arrival**  
7:00AM

**Tonight's Attire**  
Casual

**All Aboard**  
March 8, 2026  
5:30PM

## Scenic Cruising

Today the bow will be open at 6:00am as we cruise into Sydney (weather permitting). You can access the bow by following the signs on Deck 4, forward. Please ensure any loose articles are secure before stepping outside.

## Immigration Inspection

Please refer to the letter delivered to your stateroom with instructions for the mandatory face to passport immigration inspection today. The inspection will begin at approximately 7:30am and all guests are required to attend the inspection, even if remaining on board.

## Port Shuttle Service

Throughout our overnight stay in Sydney, a complimentary shuttle service will operate continuously between the ship and the Hilton Sydney Hotel.

When going ashore, please remember to carry your stateroom keycard and a government issued photo ID.

## Today's Highlights

### Modern Calligraphy

9:30am & 3:30pm *Art Studio, 5*

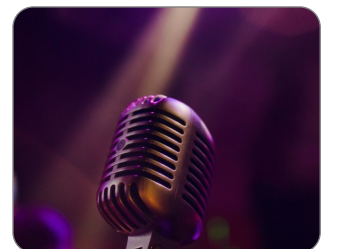
Calligraphy techniques for beginners.



### Music Trivia: Back to the 60s

6:30pm *MIX, 5*

Getting a perfect score is harder than you think!



VOLENDAM  
**GRAND**  
WORLD VOYAGE

## TODAY'S ACTIVITIES & PROMOTIONS

6:00am	The Bow is Open for Scenic Cruising	Bow, 4
6:00am	<b>Sydney Rolls and Coffee are Served</b>	Bow, 4 Sea View Poolside, 8 Crow's Nest, 9
7:00am	<b>Volendam Arrives in Sydney</b>	
7:00am	<b>Stretch &amp; Release</b>	Lido Poolside, 8
7:30am	<b>Abs Class</b>	Lido Poolside, 8
8:00am	Sydney Photo Opportunity <b>PROMOTION</b>	Pier Ashore
8:00am	<b>Tai Chi for Everyone</b>	Lido Poolside, 8
8:30am	<b>Ask Your Travel Guide</b> <b>LOCAL</b>	Pier Ashore
8:30am	<b>Origami Folding: Crane</b>	Art Studio, 5
9:00am	<b>Around the World Basketball</b>	Sport Court, 9
9:30am	<b>Modern Calligraphy</b>	Art Studio, 5
10:00am	Party Bridge Play until 12:00pm	Hudson Room, 5
10:00am	Mahjong Players Meet until 1:00pm	Explorer's Lounge, 5
10:00am	<b>Golf Putting</b>	Sport Court, 9
11:30am	Make Your Dining Reservations until 3:00pm	Lido Poolside, 8
12:30pm	Navigator & Internet Assistance is Available until 4:00pm	Wajang Desk, 4
1:00pm	Party Bridge Play until 4:00pm	Hudson Room, 5
1:00pm	<b>Lightning Trivia</b>	MIX, 5
2:00pm	Today's Movie: The Smashing Machine <b>MOVIE</b>	Wajang Theater, 4
3:00pm	<b>A Pickup Game of Pickleball</b>	Sport Court, 9
3:30pm	<b>Modern Calligraphy</b>	Art Studio, 5
4:00pm	<b>Team Trivia Challenge</b>	Crow's Nest, 9

4:00pm	<b>Let's Play Shuffleboard</b>	Sport Court, 9
4:30pm	<b>Friends of Bill W. Meet</b>	Hudson Room, 5
4:30pm	<b>Origami Folding: Crane</b>	Art Studio, 5
5:00pm	<b>Evening Catholic Prayer</b>	Wajang Theater, 4
5:00pm	<b>Evening Stretch</b>	Fitness Center, 8
5:00pm	Have Your Casual Portrait Taken <b>PROMOTION</b>	Atrium, 5
5:30pm	<b>Welcome Aboard Steak Dinner</b>	Lido Market, 8
6:00pm	<b>Singles &amp; Solo Travelers Meetup</b>	Crow's Nest, 9
6:30pm	<b>Music Trivia: Back to the 60s</b>	MIX, 5
6:30pm	<b>PRIDE Meetup</b>	Crow's Nest, 9
7:30pm	<b>On World Stage: Patrick McMahon</b>	World Stage, 4 & 5
8:30pm	<b>Meet for a Game of Backgammon</b>	Library Café, 5
8:30pm	Today's Movie: The Smashing Machine <b>MOVIE</b>	Wajang Theater, 4
9:00pm	<b>On World Stage: Patrick McMahon</b>	World Stage, 4 & 5

## TODAY ON WORLD STAGE *Decks 4 & 5, forward*

7:30pm & 9:00pm



Vocalist  
**PATRICK MCMAHON**

"Country Days"

Celebrating the classic hits of Glenn Campbell, Johnny Cash, Bob Dylan, Kenny Rogers and more...Patrick rocks them all!

## TODAY'S MOVIE *Wajang Theater, 4*

2:00pm & 8:30pm



**The Smashing Machine**

Boxing/Docudrama, Rated R, 2 hours 3 minutes

The story of mixed-martial arts and UFC champion, Mark Kerr.

## LIVE MUSIC

OCEAN BAR	Explorer's Lounge	OCEAN BAR
Solo Guitarist Shelly	Vivace	The Dam Band
5:00pm	4:00pm	8:15pm
6:00pm	6:30pm	9:15pm
7:00pm	8:30pm	10:15pm