

DINING HIGHLIGHTS

Morimoto by Sea

5:00pm - 9:30pm *Pinnacle Grill, 4*

Tonight the Pinnacle Grill transforms into Morimoto by Sea, serving dishes specially created by Chef Morimoto featuring fresh fish, sake and more.



TONIGHT IN THE DINING ROOM

Curried Chicken Puff

mint chutney, mango papaya salad



New Zealand Fresh Trevally

lemon tomato compote, crispy capers, spinach

HOURS

Restaurants

Dining Room

Cruising Classics
7:30am - 9:00am
5:00pm - 9:00pm
Deck 4, aft

Canaletto \$

Fresh Italian Pasta
5:00pm - 9:30pm
Deck 8, mid-ship

Pinnacle Grill \$

Morimoto by Sea
5:00pm - 9:30pm
Deck 4, mid-ship

Lido Market

Casual Dining
6:00am - 10:00am
11:30am - 2:00pm
2:00pm - 4:00pm*
5:30pm - 8:00pm
10:30pm - 11:30pm*
Deck 8, mid-ship & aft

Dive-In

Burgers & Hot Dogs
11:30am - 6:00pm
Deck 8, forward

\$ cover charges apply * select stations available

HOURS

Cafés & Bars *A full list of bar hours is available on Navigator*

Crow's Nest Café	2:00pm - 12:00am	Deck 9, forward
Library Café	6:00am - 9:00pm	Deck 5, aft
MIX	2:00pm - close	Deck 5, mid-ship
Lido Bar	7:00am - 9:00pm	Deck 8, mid-ship
Ocean Bar	10:00am - 12:00am	Deck 5, forward
Sea View Bar	9:00am - 11:30pm	Deck 8, aft

50% Happy Hour: all cocktails, wine by the glass, beers and house spirits under \$12.

4:00pm - 5:00pm & 6:30pm - 7:30pm, Crow's Nest, 9

4:00pm - 5:00pm & 6:30pm - 7:30pm, Ocean Bar, 5

4:00pm - 5:00pm & 6:30pm - 7:30pm, Sea View Bar, 8

Guests ages 21+ are welcome to purchase and consume alcoholic beverages. Proper identification is required, and guests will be asked to verify their age.

Recreation

Casino	11:00pm - late Slots	Deck 5, mid-ship
Fitness Center	6:00am - 9:00pm	Deck 8, forward
Hot Tubs	9:00am - 9:00pm	Deck 8
Pools	7:00am - 9:00pm <i>Lido</i> 7:00am - 7:00pm <i>Sea View</i>	Deck 8
Spa & Salon	8:00am - 10:00pm	Deck 8, forward

Services

Dining Reservations	24 hours - Dial 88	Deck 4, mid-ship
Future Cruises	2:00pm - 5:00pm	Deck 5, aft
Guest Services	24 hours - Dial 90	Deck 4, forward
Medical Center	8:00am - 10:00am 4:00pm - 6:00pm Dial 3200 or 90 for consultations Dial 911 for emergencies	Deck 1, forward
Room Service	24 hours - Dial 92	
Shore Excursions	3:00pm - 6:00pm	Deck 4, mid-ship

Shopping

EFFY Jewelry	2:30pm - 10:00pm	Deck 5, mid-ship
Photo Shop	2:00pm - 10:00pm	Deck 4, forward
The Shops	2:30pm - 10:00pm	Decks 4 & 5



Wednesday, March 4, 2026 • Waitangi, New Zealand

Arrival
7:00AM

Tonight's Attire
Casual, with a
Splash of Orange

Last Tender
1:30PM

First Tender Back: 10:30AM

Tendering Ashore

Today we will be using tender boats to transport you from ship to shore. For Holland America Shore Excursions, please be at the designated meeting place at the time listed on the ticket in your Navigator wallet. All other guests must request a tender ticket to go ashore. Tickets will be available at 7:00am in Ocean Bar, 5.

When going ashore, please remember to carry your stateroom keycard and a government issued photo ID.

New Zealand Biosecurity Notice

New Zealand enforces strict biosecurity regulations that prohibit the removal of certain food items from the vessel. Items such as fresh fruit and vegetables, all types of meat, prepared meals (including sandwiches), dairy products, eggs, and honey, as well as flowers, seeds, and plants, must not be taken ashore.

Guests going ashore may also be requested to present their hand luggage, including backpacks, for inspection if required by biosecurity authorities.

Today's Highlights

The Orange Party

8:30pm *Crow's Nest, 9*

Throw on some orange for the biggest Dutch party at sea!



TODAY'S ACTIVITIES & PROMOTIONS

7:00am Volendam Arrives in Waitangi		
7:00am	Waitangi Photo Opportunity PROMOTION	Pier Ashore
7:00am	🕒 🧑 Stretch & Release	Lido Poolside, 8
7:30am	🕒 🧑 Abs Class	Lido Poolside, 8
7:30am	🕒 🧑 Ask Your Travel Guide LOCAL	Pier Ashore
8:00am	🕒 🧑 Tai Chi for Everyone	Lido Poolside, 8
8:30am	🕒 🧑 Origami Folding: Tulip	Art Studio, 5
9:00am	🕒 🧑 Around the World Basketball	Sport Court, 9
9:30am	🕒 🧑 Creating Doodle Designs	Art Studio, 5
10:00am	Party Bridge Play until 12:00pm Hudson Room, 5	
10:00am	Mahjong Players Meet until 1:00pm Explorer's Lounge, 5	
1:00pm	Party Bridge Play until 4:00pm Hudson Room, 5	
1:00pm	🕒 🧑 Today's Trivia: Orange	MIX, 5
1:30pm Last Tender as Volendam Departs Waitangi		
2:00pm	EFFY Jewelry Auction Preview PROMOTION	EFFY Jewelry, 5
2:00pm	🕒 🧑 Golf Putting	Sport Court, 9
2:30pm	🕒 🧑 Craft Workshop: Canvas Board Dot Painting (Blue)	Lido Market, 8
3:00pm	Today's Movie: The Adventures of Priscilla: Queen of the Desert MOVIE	Wajang Theater, 4
3:00pm	🕒 A Pickup Game of Pickleball	Sport Court, 9
3:00pm	🕒 🧑 Ask Your Travel Guide LOCAL	Travel Guide Desk, 4
3:00pm	Natural Relief for Arthritis, Back and Knee Pain PROMOTION	Greenhouse Spa, 8
3:30pm	🕒 🧑 Creating Doodle Designs	Art Studio, 5
4:00pm	🕒 🧑 Team Trivia Challenge	Crow's Nest, 9

4:00pm	🕒 🧑 Tech for Travelers: Q&A	Wajang Desk, 4
4:00pm	🕒 🧑 Let's Play Ladder Ball	Sport Court, 9
4:30pm	🕒 Friends of Bill W. Meet	Hudson Room, 5
4:30pm	🕒 🧑 Origami Folding: Tulip	Art Studio, 5
5:00pm	🕒 🧑 Mass is Celebrated	Wajang Theater, 4
5:00pm	🕒 🧑 Evening Stretch	Fitness Center, 8
5:00pm	Orange Party Casual Portrait Studios PROMOTION	Atrium, 5
6:30pm	🕒 🧑 Trivia: Guests vs. Officers NEW TODAY	MIX, 5
7:00pm	Exotic & Phenomenal: Rare Gemstones Reveal PROMOTION	EFFY Jewelry, 5
7:30pm	🕒 🧑 On World Stage: Chris Powley	World Stage, 4 & 5
8:00pm	🕒 🧑 The Orange Party Line Dance	Crow's Nest, 9
8:30pm	🧑 The Orange Party NEW TODAY Throw on some orange for the biggest Dutch party at sea!	Crow's Nest, 9
8:30pm	Today's Movie: The Adventures of Priscilla: Queen of the Desert MOVIE	Wajang Theater, 4
9:00pm	🕒 🧑 On World Stage: Chris Powley	World Stage, 4 & 5
9:45pm	🕒 🧑 The Orange Party "Best Dressed" Contest	Crow's Nest, 9
10:45pm	🧑 Dance to the Hits	Crow's Nest, 9

TODAY ON WORLD STAGE Decks 4 & 5, forward

7:30pm & 9:00pm



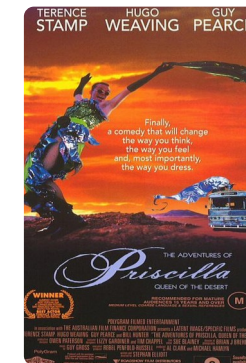
Vocalist
CHRIS POWLEY

"The Voice of Legends"

Performing songs of legends such as Neil Diamond, Tom Jones, Elvis and more!

TODAY'S MOVIE Wajang Theater, 4

3:00pm & 8:30pm



The Adventures of Priscilla: Queen of the Desert

Comedy, Rated R, 1 hour 44 minutes

Two drag performers and a transgender woman travel across the desert to perform their unique style of cabaret.

LIVE MUSIC

Explorer's Lounge

Vivace

2:30pm, 4:00pm, 6:30pm, 8:30pm

OCEAN
BAR

Guitarist Sebastian

4:00pm

OCEAN
BAR

Piano Bar Entertainer Grace

6:45pm, 8:15pm, 9:15pm

Crow's Nest

The Dam Band

8:30pm, 10:00pm