



THE DAILY

Thursday, April 24, 2025 • Barcelona, Spain

Arrival
10:00AM

Tonight's Attire
Casual

All Aboard
Overnight

Going Ashore in Barcelona

When going ashore, please remember to carry your stateroom keycard, and government issued photo ID. If you have a Holland America Line Shore Excursion, please follow the information on your tour ticket located in your Navigator Wallet.

Shuttle Service

We will provide a complimentary shuttle to World Trade Center. Shuttles run approximately every 30 minutes beginning at 10:30am and throughout the evening. The last shuttle will depart World Trade Center on April 25 at 7:30am. Regretfully, an ADA shuttle is not available. Due to the high volume of cruise ships in port, shuttle service will not be available on April 25. Taxis, local buses and UBERs are available at the terminal.

Please note that a deviation from the shuttle bus destination or its schedule may occur without notice depending on maximized seating capacity, local traffic, or restructured route information. Zuiderdam is not liable for any unforeseen delays or changes.

Visiting Volendam?

You are welcome to explore the Volendam all day until 10:00pm on April 24 and from 7:00am to 3:00pm on April 25. Collect your visitor pass at Zuiderdam Guest Services starting at 10:30am on April 24 and this must be returned by 3:00pm on April 25. When going there, please use the terminal skybridge to proceed directly to the Volendam.

Today's Highlights

Grand Meetup Farewell Party* with DJ Reggie Jenkins

8:00pm - 11:00pm Sea View Poolside, 9

Enjoy a selection of complimentary drinks under the evening sky.

Join us for a Toast*

9:05pm Sea View Poolside, 9

Cheers by Captain Frank van der Hoeven and Beth Bodensteiner, President Holland America Line
*Weather permitting, else Lido Poolside

Grand Meetup Drone Show

9:15pm - 9:27pm Sea View Poolside, 9

Join us on deck for a dazzling show illuminating the night sky. *Weather permitting.

NEW TODAY



NEW TODAY



NEW TODAY



ZUIDERDAM
GRAND
WORLD VOYAGE

TODAY'S ACTIVITIES & PROMOTIONS

7:00am	Sunrise Stretch	Lido Poolside, 9
8:00am	Mass is Celebrated	Hudson Room, 3
8:00am	Tai Chi for Everyone	Lido Poolside, 9
8:00am	Advanced Pickup Game of Pickleball	Sport Court, 11
8:30am	Total Body Conditioning PROMOTION	Fitness Center, 9
9:00am	The Bow is Open for Scenic Cruising <i>Times are approximate.</i>	Bow, 4
9:00am	Scenic Cruising: Barcelona LOCAL Can be heard in the Crow's Nest, on all outside decks and the bow camera channel on your stateroom TV. <i>Times are approximate.</i>	
9:00am	Barcelona Rolls, Orange Juice & Coffee are Available	Bow, 4 & Crow's Nest, 10
9:00am	Intermediate Pickup Game of Pickleball	Sport Court, 11
9:00am	Q&A with Your Tech for Travelers Host	Atrium, 1
9:00am	Ping Pong Tournament	Lido Poolside, 9
9:30am	Creating Designs for Doodles	Art Studio, 10
9:30am	Pathway with Yoga \$20	Fitness Center, 9
9:45am	Water Cannon Welcome NEW TODAY Positioned approximately between ships <i>Times are approximate. Captain to announce.</i>	
10:00am	Party Bridge Play until 12:00pm	Hudson Room, 3
10:00am	Beginner Pickup Game of Pickleball	Sport Court, 11
10:00am	<i>Barcelona Photo Opportunity until 1:00pm</i> PROMOTION	Pier Ashore
1:00pm	Meet for a Game of Mahjong until 4:00pm	Stuyvesant Room, 3
1:30pm	Party Bridge Play until 4:00pm	Hudson Room, 3
2:00pm	Today's Movie: Lee	World Stage, 1, 2 & 3
2:30pm	Grand Meetup Afternoon Tea until 4:00pm <i>By prior reservation and with confirmation card only.</i>	Dining Room, 3
3:00pm	A Game of Pickleball: On Volendam until 5:00pm	Volendam's Sport Court, 9
3:30pm	Modern Brush Lettering	Art Studio, 10
3:30pm	50% Off Happy Hour PROMOTION wine, beer and cocktails \$11 or less	Ocean Bar, 3 & Billboard Onboard, 2

4:00pm	Today's Trivia: General Knowledge	Billboard Onboard, 2
4:30pm	Friends of Bill W. Meet	Stuyvesant Room, 3
4:30pm	Origami Folding: Recap Part 7	Art Studio, 10
5:00pm	Ping Pong Tournament	Lido Poolside, 9
5:00pm	Evening Stretch	Fitness Center, 9
5:00pm	Martini Hour at the Pinnacle Bar PROMOTION	Pinnacle Bar, 2
5:30pm	PRIDE Meetup	Crow's Nest, 10
6:00pm	Footprint and Posture Analysis PROMOTION	Fitness Center, 9
6:00pm	50% Off Happy Hour PROMOTION wine, beer and cocktails \$11 or less	Ocean Bar, 3 & Billboard Onboard, 2
6:30pm	Singles & Solo Travelers Meetup	Gallery Bar, 2
7:00pm	Music Trivia: One Hit Wonders	Billboard Onboard, 2
8:00pm	Grand Meetup Farewell Party NEW TODAY with DJ Reggie Jenkins until 11:00pm	Sea View Poolside, 9
9:05pm	Join us for a Toast NEW TODAY Cheers by Captain Frank van der Hoeven and Beth Bodensteiner, President Holland America Line <i>*Weather permitting, else Lido Poolside</i>	Sea View Poolside, 9
9:15pm	Grand Meetup Drone Show NEW TODAY ends at 9:27pm	Sea View Poolside, 9

LIVE MUSIC

Rolling Stone LOUNGE

Rolling Stone Lounge Band Plays

Rock
Classics
6:00pm

Rock
the 80s
7:00pm

billboard onboard

Billboard Onboard

Returns Tomorrow

OCEAN BAR

FantaSea Plays

4:00pm

5:00pm

6:45pm

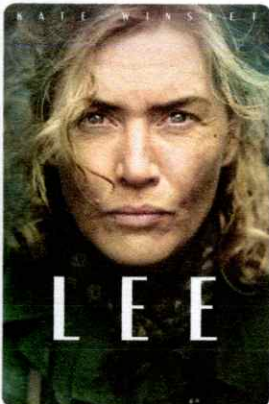
Explorer's Lounge

Classical Trio

Returns Tomorrow

TODAY ON **WORLD** STAGE

Decks 1, 2 & 3, forward



2:00pm

TODAY'S MOVIE:

Lee

(2023) Docudrama, Rated R, 1 hour 57 minutes

The story of American photographer Lee Miller, a fashion model who became an acclaimed war correspondent for Vogue magazine during WWII.

DINING HIGHLIGHTS

Scenic Cruising: Barcelona

9:00am Bow, 4 & Crow's Nest, 10

The Bow is open for scenic cruising. Barcelona rolls, orange juice & coffee are available. Scenic narration can be heard in the Crow's Nest, on all outside decks and the bow camera channel on your stateroom TV. *Times are approximate.*



Grand Meetup Afternoon Tea

2:30pm - 4:00pm Dining Room, 3

Join us for a special tea in the Dining Room this afternoon to celebrate this unique occasion. *By prior reservation and with confirmation card only.*



Grand Meetup Dinner

5:00pm - 8:00pm Dining Room, 2 & 3

Tonight, enjoy a special dinner crafted by our chefs, featuring regionally inspired flavors to celebrate this unique occasion.



HOURS

Restaurants

Dining Room

Cruising Classics

7:30am - 9:00am

5:00pm - 8:00pm

Decks 2 & 3, aft

Pinnacle Grill

Closed

Deck 2, mid-ship

Dive-In

Burgers & Hot Dogs

11:30am - 6:00pm

Deck 9, mid-ship

Lido Market

Casual Dining

6:30am - 10:00am

11:30am - 2:00pm

2:00pm - 4:00pm*

5:30pm - 7:30pm

10:00pm - 11:00pm*

Deck 9, mid-ship & aft

 cover charges apply

* select stations available

HOURS

Cafés & Bars *A full list of bar hours is available on Navigator*

Crow's Nest Café	6:00am - 10:00pm	Deck 10, forward
Pinnacle Bar	7:00am - 10:00pm	Deck 2, mid-ship
Gallery Bar	5:00pm - close	Deck 2, forward
Sea View Bar	9:00am - 11:30pm	Deck 9, aft
Ocean Bar	10:00am - 11:30pm 3:30pm - 4:30pm <i>Happy Hour</i> 6:00pm - 7:00pm <i>Happy Hour</i>	Deck 3, mid-ship
Billboard Onboard	3:00pm - close 3:30pm - 4:30pm <i>Happy Hour</i> 6:00pm - 7:00pm <i>Happy Hour</i>	Deck 2, forward

Guests ages 21+ are welcome to purchase and consume alcoholic beverages. Proper identification is required, and guests will be asked to verify their age.

Recreation

Casino	closed	Deck 2, forward
Fitness Center	6:00am - 9:00pm	Deck 9, forward
Hot Tubs	8:00am - 10:00pm	Deck 9
Pools	7:00am - 10:00pm <i>Lido</i> 7:00am - 10:00pm <i>Sea View</i>	Deck 9
Spa & Salon	8:00am - 10:00pm	Deck 9, forward

Services

Dining Reservations	24 hours - Dial 88	
Future Cruises	8:00am - 11:00am	Deck 1, mid-ship
Guest Services	24 hours - Dial 90	Deck 1, mid-ship
Medical Center	8:00am - 10:00am 4:00pm - 6:00pm By appointment-Dial 32000 Dial 911 for emergencies	A Deck, forward
Room Service	24 hours - Dial 92	
Shore Excursions	8:00am - 10:00am	Deck 10, forward

Shopping

Captain's Collection	closed	Deck 2, mid-ship
The Shops	closed	Deck 3, mid-ship
EFFY Jewelry	closed	Deck 3, mid-ship
Photo Shop	closed	Deck 3, aft

Local Sales Tax

All purchases made on board are subject to a local tax while the ship is within twelve nautical miles of Barcelona.