



Sites in Israel

by Marilyn Farber and Mark Zober

Israeli Tour Guides

marilynfarber99@gmail.com

mzober@gmail.com



Map of Israel



Ashdod Port Israel

Wednesday April 20, 2022
8 am to 11 pm

Map

Satellite

Park Nemalei Israel

Ashdod Terminal - Friedenson

Ashdod Oref ha-Nam

Port of Ashdod

Ashdod Port Authority

Trucks position

Perfect Line

Tel Mor

Ashdod Port Clinic

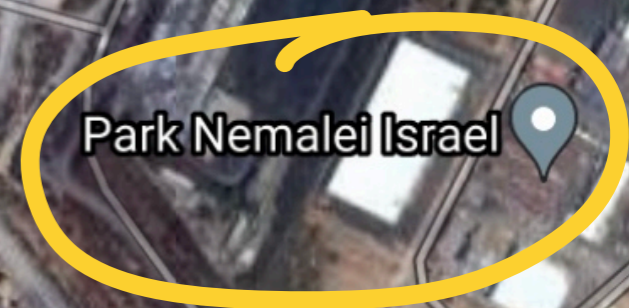
Electrical Warehouses Ashdod

Idi Fish

Shufersal Deal Extra

IQ. Logist

Google



Haifa Port Israel

Thursday, April 21
8 am to 10:30 pm

Map

Satellite

Train Station

Cruise ships



Allenby Interchange

Rambam Health Care Campus

BAT GALIM

Lin Medical Center

EIN HAYAM

RAMAT SHAUL

KIRYAT SHPRINTZAK

HAMOSHAVA HAGERMANIT

KARMEL TSARFATI

Derech Allenby

WADI NISNAS

SHAAR HAALIYA

RAMAT HATISHBI

Bahá'í Gardens Haifa - Balcony

WADI SALIB

RAMAT HANASI

RAMAT HANASI NEVE DAVID

MT. KARMEL WEST

KABABIR

Bnai Zion Medical

NAHALA

Elisha Hospital

GE'ULA

Joshua Field Cemetery

Google

Essentials

- **Money: Shekels (NIS) \$1 USD = 3.29 ILS**
- **Weather: Around 70-75 F during the day but cold at night, especially in Jerusalem. Warmer at the Dead Sea**
- **Visa: not necessary**
- **Safety: very safe except for pick pockets in crowded area, such as the Old City in Jerusalem and popular viewpoints**
- **Internet: Buy a SIM card or get free WiFi at hotels, restaurants and on buses**
- **Taxis: Ask driver to turn on the meter**
- **Rental cars: not very convenient and drivers are very aggressive**
- **Train: next to the port in Haifa**
- **Uber (not private, same as Taxi's)**
- **Clothing: modest dress for Old City in Jerusalem and all religious sites**
- **Navigation: Moovit app on your iPhone**

Traditional Foods

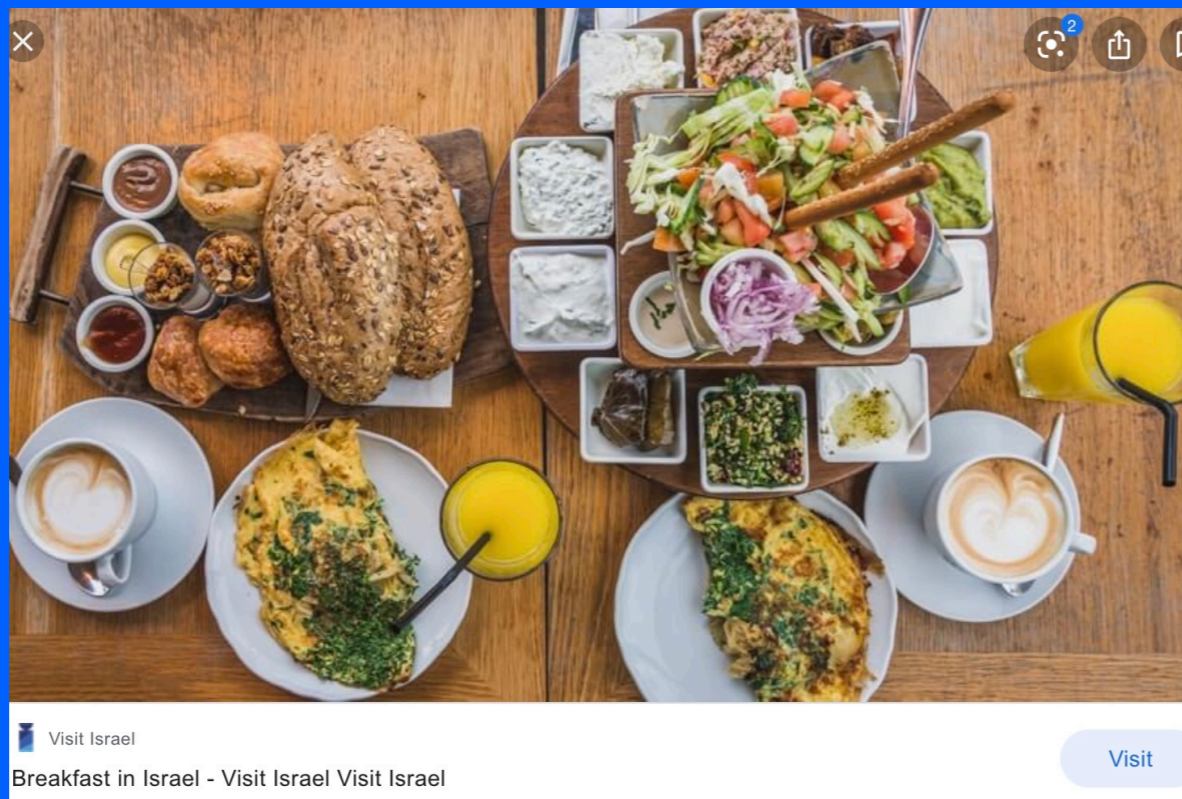


Falafel

Meze (salads)

Shakshuka

Hummus



Typical Breakfast

Holiday of Pesach (Passover)

Shouldn't affect your visit except
if you eat at Jewish restaurants
you will be served Matza or
“fake” bread



Getting to Jerusalem from Ashdod

- Get a taxi at meeting place outside the gate (~\$75)
- Go to central bus station in Ashdod
- Hire private guide with car (~\$650 for 4 people)
- Plan ahead with a group (usually up to 10 people) and hire a guide and driver (~\$110-150 pp)
- Rent a car in downtown Ashdod or Jerusalem
- Take a HAL Tour

Approximate Distances between cities (in miles) and travel times

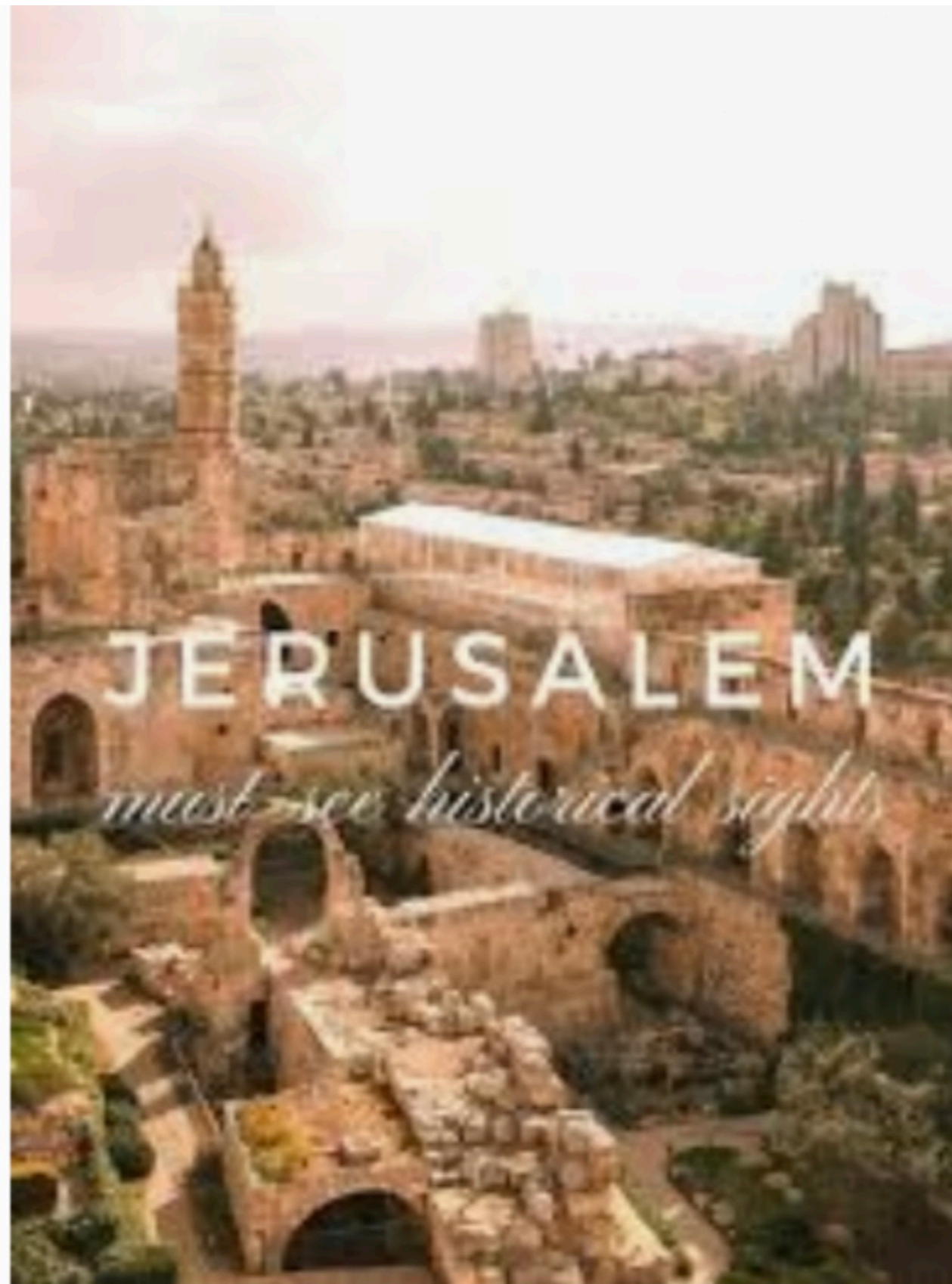


Ashdod to Jerusalem
40 miles
1+ hours

Jerusalem to Dead Sea/Masada
25/62 miles miles
.5-1.5 hours

Jerusalem to Sea of Galilee
109 miles
2 hours

Sea of Galilee to Haifa
41 miles
1 hour



JERUSALEM

must-see historical sights

Jerusalem ~1+ hours from Ashdod

Yad VaShem (Holocaust) Museum



The Israel Museum

Israel Museum



Hall of Names in the Yad Vashem ...



Dead Sea Scrolls



The Second Temple Jerusalem Model

The Old City With the Dome of the Rock



The Western Wall Tunnels



The Western Wall



Bethlehem

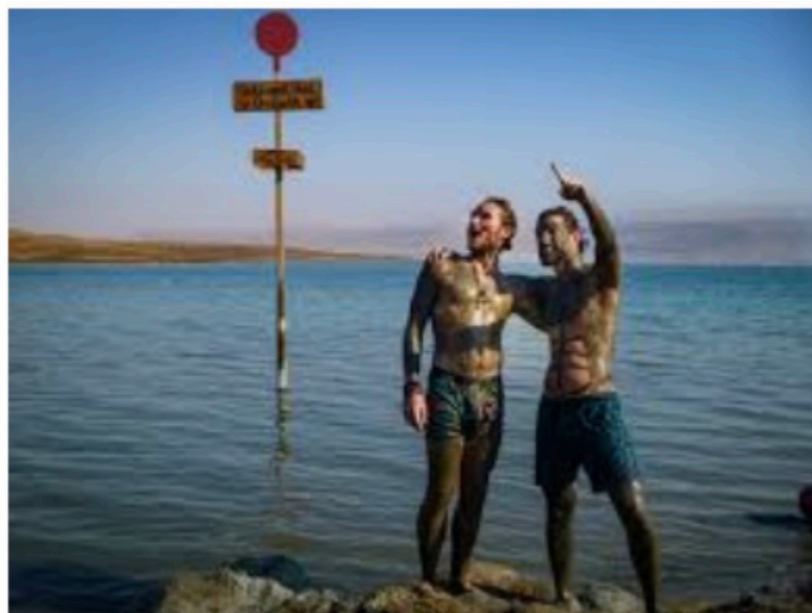
Church of the Nativity



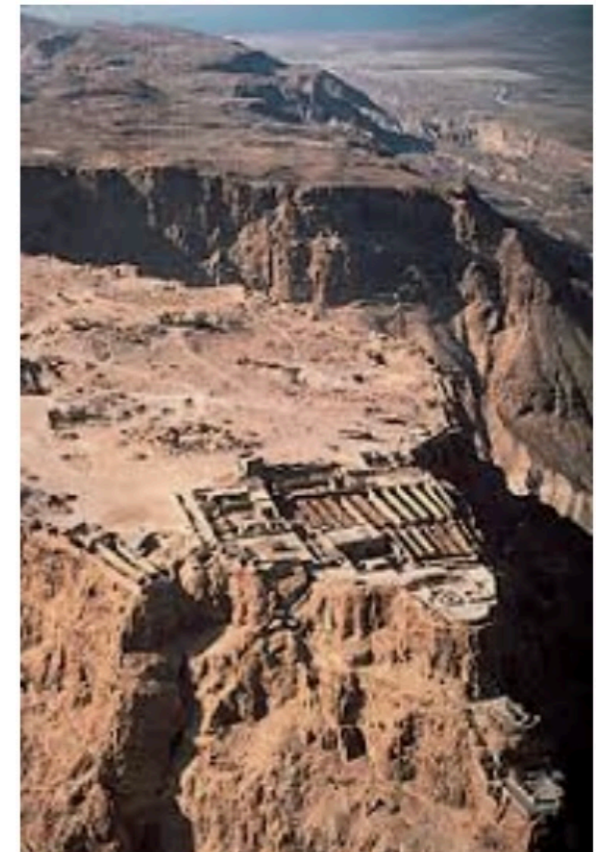
Bethlehem is about 15 minutes south of Jerusalem but there may be a long wait at the checkpoint



The Dead Sea and Masada



About 1-2.5
hours from
Jerusalem



Nazareth

2.5 hours from
Jerusalem and 30
minutes to Haifa

Church of the Annunciation

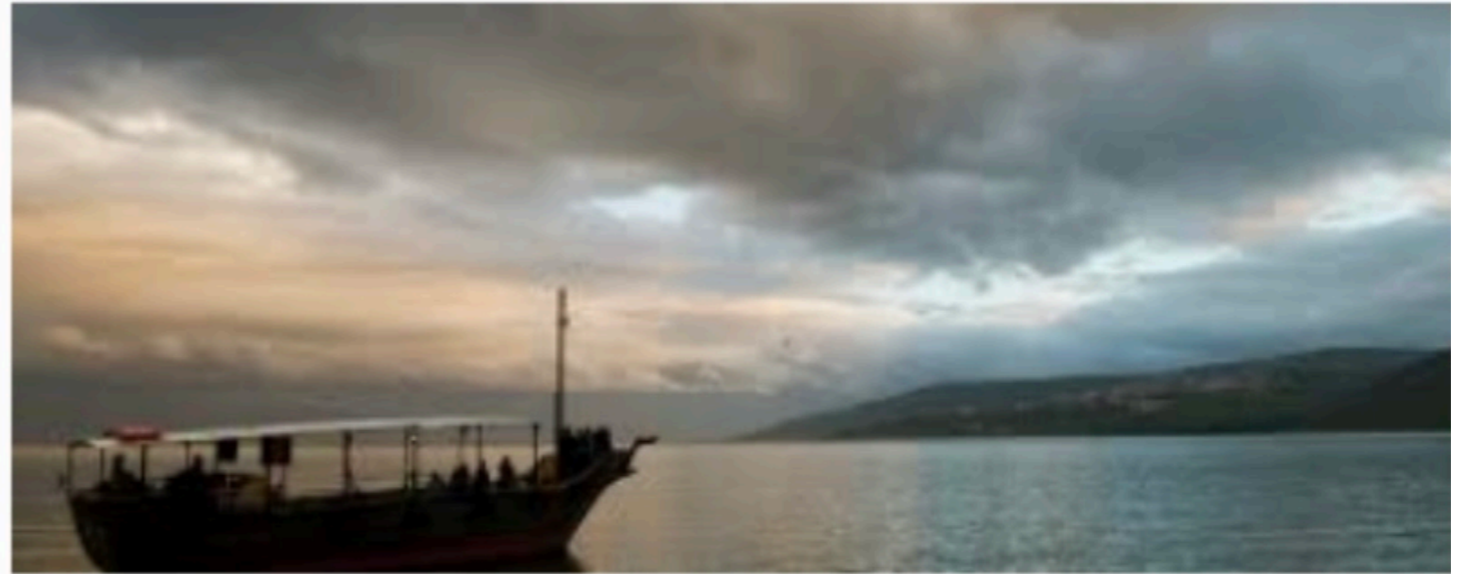


Basilica of Annunciation - BibleWalks....



Basilica of the Annunciation | I

The Sea of Galilee in Tiberias



Around 2 hours
from Jerusalem,
and 50 minutes to
Haifa



Haifa

Ba'Hai Gardens (via the Carmelite funicular)

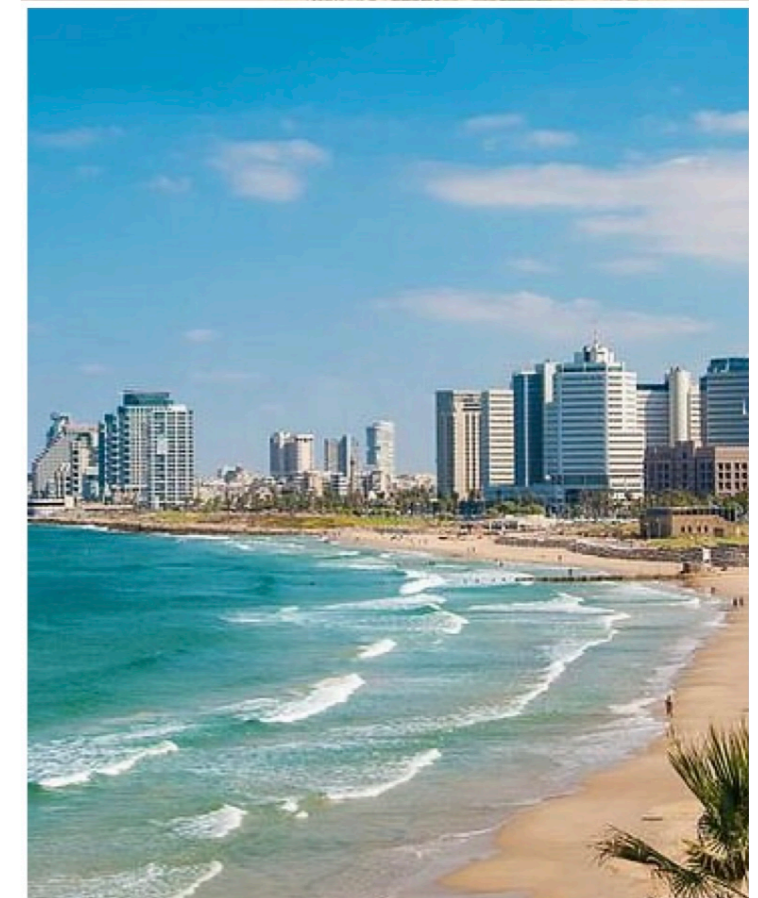
The Baha'i Gardens



Train to Tel Aviv
or
Acre (Akko) or Caesarea



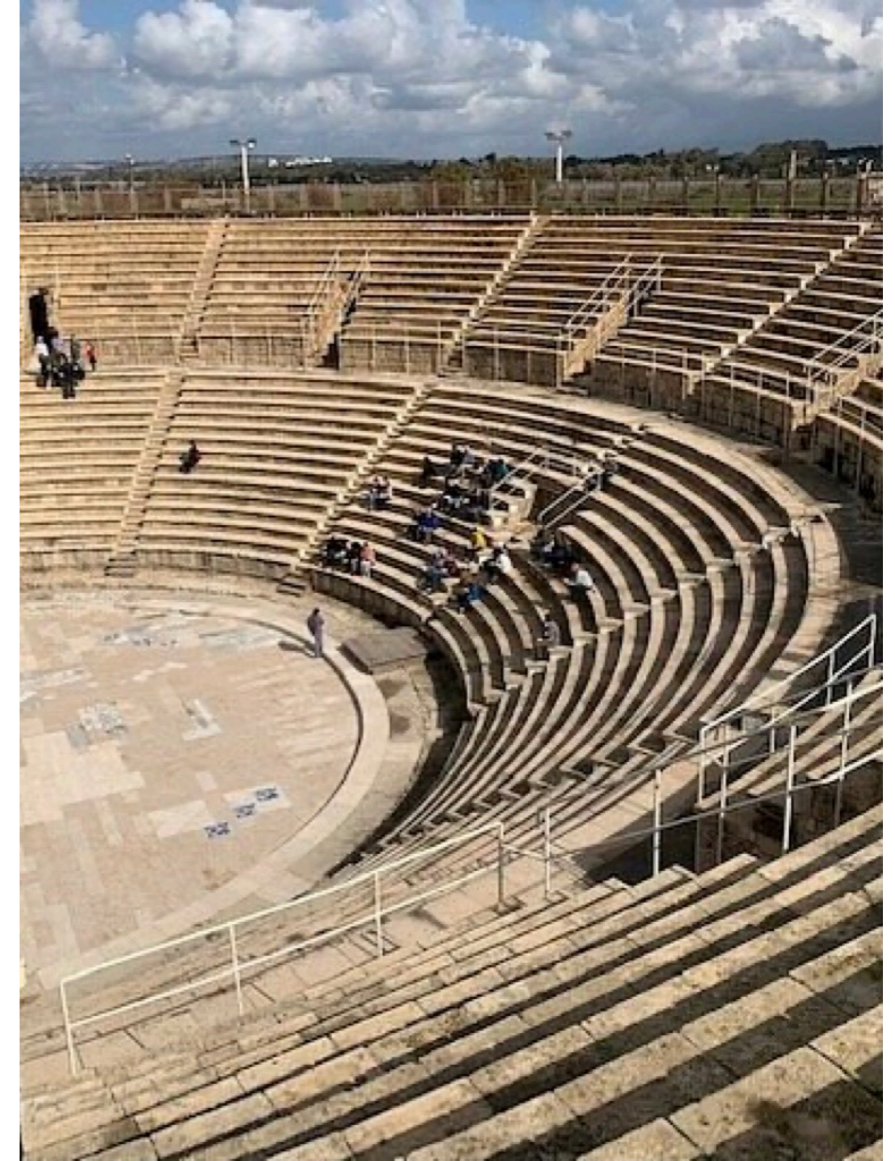
Tel Aviv and Jaffa



Easy to get to on the train or taxi from Haifa or Ashdod.
Has great shopping and beautiful beaches. Jaffa is a very interesting city. But it is a big city like many big cities

Caesarea

Caesarea National Park



Can take a train near the port in Haifa or a tour or get a taxi for ~\$80.
Caesarea is 22 miles south of Haifa. See the movie at the entrance.

Akko (Acre) Fortress



Can take the train or a taxi (\$50) or a private guide. The fortress has audio guided tours. Distance is 16 miles from Haifa

HAL Tours

Leisurely Jerusalem - \$139

Jerusalem and Yad Vashem Museum - \$179

Masada Fortress & The Dead Sea - \$234

Bethlehem, View of Jerusalem & Garden of Gethsemane - \$149

The Best of Jerusalem & The Old City - \$159

A Stroll Through Jaffa & Tel Aviv - \$89

Culinary Workshop at Jerusalem's Machane Yehuda Market - \$399

Jerusalem, Bethlehem, Nazareth & Sea of Galilee (overnight) - \$699/\$999

Masada & Jerusalem (overnight) - \$729/\$1,029

Contact person in Israel for
private tours:
Judy Auerbach

What's App: 972-5088-23313

Email: judy@eyetours.net

Telephone: 1-410-387-7611