

2016, 1 APRIL, FRIDAY

Day: First day of the Month

Forecast: Look up

Temperature: Boiling Hot (31°C / 88°F)

Sunrise / Sunset: Ask Jeff (6:18am / 6:37pm)

This Evening's Dress: Clothes

Arrival: When We Get There (8:00am)
All Aboard: When We Leave (5:30pm)

WELCOME TO SALALAH, OMAN

Bringing the cultures, tastes and unique Holland America Line experiences to life, both on board and off.

Today's highlights include:

Going Ashore

When going ashore please have your guest identification card (room key) ready to scan into the security system when leaving and re-boarding the vessel. You will also need to carry with you a form of government-issued photo identification.

Shuttle Service

The local Port Authority offers a complimentary shuttle service, taking guests from the ship to the port gate. Shuttle service will run from approximately 8:00am - 5:00pm. Guests will not be permitted to walk in the port area. The local taxi unions had prohibited shuttle buses going into town. Shuttle buses are operated by a non-Holland America Line service. Scheduling and timing of buses cannot be guaranteed.

Ask Your Location Guide Barbara - 8:00am

PIER

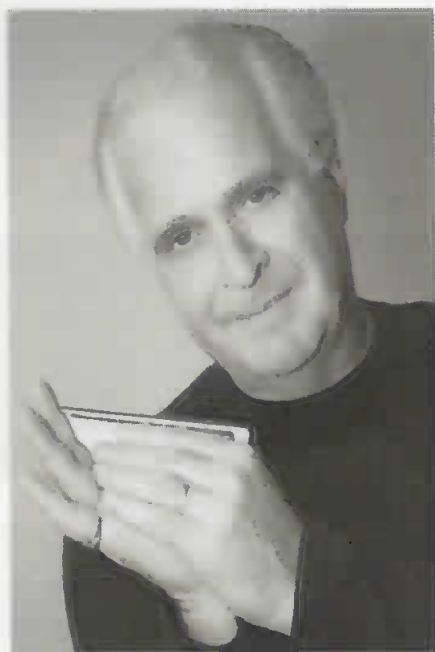
Meet Barbara for last minute questions on the pier.

Not For Fun Pub Trivia

5:00pm

PIANO BAR, 5

Grab a drink and join Show Host Erin and our bartenders for general knowledge trivia. If your team loses, you walk the plank.



April Fool's Day Costume Party - 9:00pm 11:00pm

CROW'S NEST, 9

Holy cow! Get ready for a night of music, dancing, hot appetizers and complimentary Utterly Twisted drinks as Cruise Director Gene, the Location Team, and our party band Oasis host the best April Fool's Day Costume Party on the high seas! Costumes are encouraged and prizes will be awarded throughout the night!

Did you know?

To minimize garbage, we sort all waste containers twice, recycle all we can, and seek or create charitable opportunities if materials can be reused by others. Please place paper in the recycle partition of the waste bin; and use the recycle waste bins located throughout the ship for disposing of aluminum, glass, and batteries.



Holland America Line



Showtime: Harmonica Virtuoso Bernie Fields

7:15pm

One Show Only for all Guest

QUEEN'S LOUNGE, 4 & 5

Recently opening for
Pink Martini as a featured
guest soloist with the
Pacific Symphony
in Los Angeles

MUSIC & LOUNGES

The Neptunes · 5:00pm-5:45pm,
6:15pm-7:15pm & 8:00pm-10:15pm

OCEAN BAR, 5

It's cocktails and Muppet dancing

Oasis · 4:45pm-5:30pm, 8:00pm -
11:00pm

CROW'S NEST, 9

It's time to bump and grind

Adagio · 6:00pm-10:00pm

EXPLORER'S LOUNGE, 5

Our violin and piano duo performs
sophisticated classical music on the
G-string

**Piano Bar Entertainer Debby
Bacon**

PIANO BAR, 5

9:15pm - Christmas in April

10:00pm - Tickle More than the Ivories



Amsterdam Nightclub

CROW'S NEST, 9

Show Host Erin

11:00pm - Plays HIR favorites

SHORE EXCURSIONS



Deep Sea Fishing from the Stern

By popular demand, we're excited to offer
a once-in-a-lifetime opportunity:
Deep Sea Fishing from the Stern

Today only!

Book with Shore Excursions now!

You must provide your own fishing rod and bait.

DINING



Pacific Northwest Steak & Seafood in an intimate setting.
Promenade Deck, 4
Lunch: Closed
Dinner: 5:30p-9p, \$29*



A taste of Italy featuring small plates for sharing.
Lido Deck, 8
Dinner: 5:30p-9p, \$10*



A wide variety of options for breakfast, lunch and dinner in this classic setting with ocean views.
Promenade & Upper Promenade Decks, 4 & 5
Breakfast: 7:30a-9a, Deck 4
Lunch: 12n-1p, Deck 4
Dinner: Open Seating: 5:15p-9p, Fixed Seating: 5:30p & 8p



Our casual option for breakfast, lunch and dinner.
Lido Deck, 8
Breakfast Continental: 6a-11a
Breakfast Full Buffet: 6:30a-10:30a
Lunch: 11:30a-2:30p, Lido Deli/Pizza: 11:30a-5p
Dinner: 5:30p-8p
Late Night Snack: 10:30p-11:30p



Signature burgers and hot dogs with a secret sauce.
Lido Deck, 8
Hours: 11:30a-5p

*Reservations for specialty restaurants can be made by dialing #88.



DRINKS

DRINK OF THE DAY

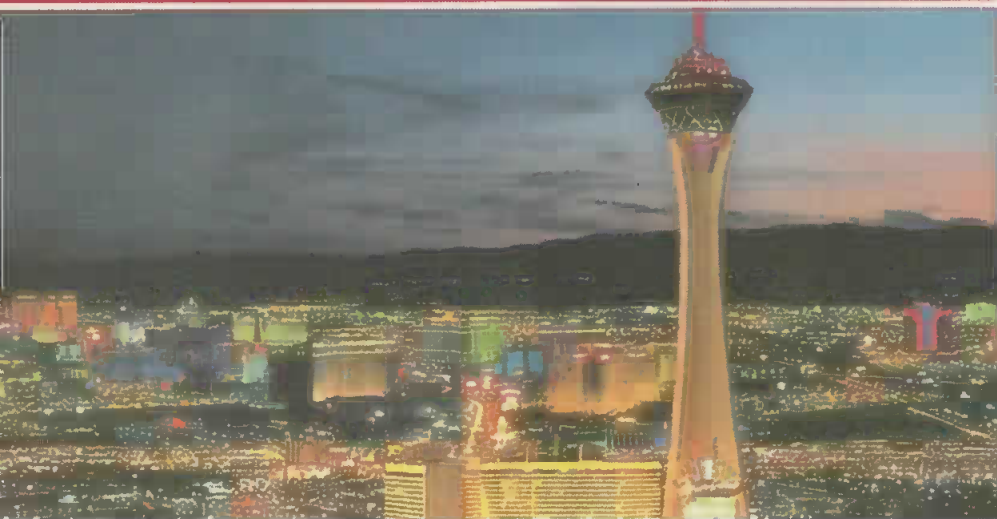
Chi Chi \$6.50

LOCATION	HOURS	HAPPY HOUR	DECK
Explorations Cafe	6a-10p	---	5
Lido Bar	9a-9p	---	8
Ocean Bar	10a-12:30a	4p-5p 6p-7p	5
Sea View Bar	9a-11p	---	8
Crow's Nest	3:30p-close	4p-5p 6p-7p 9p-10p	9
Casino Bar	5p-close	---	5
Piano Bar	8:15p-close	--	5
Explorer's Lounge	5p-10:30p	---	5

Happy Hour. Buy 1 Drink. Then Buy a Second Drink, Then repeat



11:00am	Show Host Erin Plays HER Favorites	Crow's Nest, 9
12:00pm	Debby Bacon Tickles More Than the Ivories	Piano Bar, 5
1:15pm	Christmas in April with Debby Bacon	Piano Bar, 5
2:00pm	Smoke it if you Got it Under the Stars (Non-hosted)	Sea View Bar, 8 aft
2:00pm	Texas Hold'em Tight Cash Game \$1/\$2 No Limit	Casino, 5
3:00pm-4:00pm	April Fool's Day Costume Party with Cruise Director Gene, the Location Team, and our party band Oasis	Crow's Nest, 9
7:15pm	SHOWTIME: Bernie Fields	Queen's Lounge, 4 & 5
7:00pm	Single and Solos Keep your Hands to Yourself with Culinary Arts Center Host Donna	Ocean Bar, 5
7:00pm	Sabbath Service with Rabbi Robert Gan	Hudson Room, 5
7:00pm-8:00pm	Featured Game: Caribbean Stud Muffins Join us for a fun night, a complimentary glass of bubbly, and more.	Casino, 5
8:30pm	Q&A with your Digital Workshop Host Your Digital Workshop Host, Kristin, will teach you how to turn you on	Digital Workshop, 5
8:30pm-9:30pm	ON LOCATION Salalah Sailaway Join us for music, hot appetizers and drinks as we ring the bell and bid farewell to Salalah. Sail away in style with our refreshing Chi-Chi drink special.	Lido Poolside, 8
9:00pm	Fitness Class: Total Body Shampoo & Conditioning	Fitness Center, 8
9:00pm	Mass is Celebrated with Father Lou Anderson	Wajang Theater, 4
9:00pm	Not for Fun Pub Trivia with Show Host Erin (<i>If your team loses, you walk the plank!</i>)	Piano Bar, 5
9:00pm-10:00pm	ON LOCATION Ask Your Location Guide Barbara Location Guide Barbara is available to ignore your questions.	Upper Promenade, 5
10:30pm	Introduction to the Book of Face with your Digital Workshop Host Kristin	Digital Workshop, 5
11:00pm	Just For Fun Express Team Trivia Challenge Relax it is just trivia	Ocean Bar, 5
11:00pm	Creativity At Sea: Middle Easter Inspired Paper Crafts with Culinary Arts Center Host Donna	Culinary Arts Center, 4
11:00pm	Cruise Classics: Truffle Shuffle	Sports Court, 9
11:00pm	Friends of Bill W. Meet	The Loft, 9
11:30pm	Afternoon Me Time (Tea has been Canceled)	Dining Room, 4
11:30pm	Pickle Eaters Meet	Sports Court, 9
12:00am	ON LOCATION: Cooking Demo: Quick and Easy Dates Gone Sour with Show Chef Joseph and Culinary Arts Center Host Donna	Culinary Arts Center, 4



□ 2:00pm	ms Prinsendam is expected to dock in Istanbul	
□ 2:00pm	Dunkers Meet	Sports Court, 9
□ 2:00pm	Card/Bridge Players Meet	Hudson Room, 5
□ 1:00pm	Mandatory Nap Time	Amsterdam all guests and crew
□ 12:00nn	ms Rotterdam is expected to dock in Ceuta	
□ 10:00am	ms Maasdam is expected to dock in Philipsburg	
□ 10:00am	Card/Bridge Players Meet	Hudson Room, 5
□ 9:00am	Introduction to the Book of Face with your Digital Workshop Host Kristin	Digital Workshop, 5
□ 9:00am	Daily Quiz, Sudoku & Gene's Why Bother Brainbusters May be Available	Explorations Café, 5
□ 8:00am	ms Zuiderdam is expected to dock in Willemstad	
□ 8:00am	ms Zaandam is expected to dock in Puerto Montt	
□ 8:00am	ms Oosterdam is expected to dock in Cartagena	
□ 8:00am	ms Noordam is expected to dock in Wellington	
□ 8:00am	ON LOCATION Welcome to Salalah, Oman When going ashore today please make sure you carry your guest ID card (stateroom key), as well as a form of government-issued photo ID.	
□ 8:00am	ON LOCATION Salalah Forget-Me-Nots Start the day with a smile! Your photographers will corral you at the gangway to take your picture in Salalah. <i>You may not leave the ship until your picture is taken.</i>	Gangway
□ 8:00am	ON LOCATION Meet Your Location Guide Barbara Location Guide Barbara is available on the pier to answer last minute port questions.	Pier Ashore
□ 8:00am	Sit and Sleep with Show Host Jodie	Ocean Bar, 5
□ 7:30am	Fitness Class: Flab Abs	Fitness Center, 8
□ 7:00am	Fitness Class: Early Morning Stretch Marks	Fitness Center, 8
□ 4:00am	Un-Hosted Meditation	In Your Cabin
□ 3:30am	Fog Watch	Bow, 4
□ 3:00am	The Amsterdam Clocks Go Back 24 Hours	
□ 2:00am	The Amsterdam Clocks Go Forward 24 Hours	

TODAY'S MOVIE

Brooklyn

1:00pm, 6:00pm, 8:00pm & 10:00pm

WJANG THEATER, 4

*Starring: Saoirse Ronan, Emory Cohen
and Domhnall Gleeson*

Rated: PG-13 | Time: 1 hour & 51 minutes

An Irish immigrant lands in 1950s Brooklyn, where she quickly falls into a romance with a local. When her past catches up with her, however, she must choose between two countries and the lives that exist within.

*This movie will be replayed on your
stateroom televisions tomorrow.*

ONBOARD OPPORTUNITIES

CASINO

Cashier & Tables Opens
approximately 6:30pm

Featured Game: Caribbean Stud

*Join us for a fun night of poker,
a complimentary glass of bubbly,
and a \$5 Match Play coupon.*

7:00pm - 10:00pm

Texas Hold'em Cash Game

\$1/\$2 No Limit 9:00pm

Casino Closes 12:00am*

*Hours may be extended based upon playing

Slots Open All Night

Casino, 5

MERABILLA LUXURY BOUTIQUE

Coming Soon: Pure Gold Grand Unveiling

*Don't miss the grand unveiling of Pure
Gold's new collection brought on board
in our recent ports of call.*

April 3 | At Sea | 11:00am

Queen's Lounge, 4 & 5



TODAY'S SPA SPECIAL

5 Steps to Heaven

Back, Neck, & Shoulder Massage,

Silky Skin Body Exfoliation,

Foot & Ankle Massage,

Scalp Massage, and

Pro-Collagen Eye Treatment

50 minutes for \$119

Visit the Greenhouse Spa, 8,
or dial 94 to schedule an appointment.

SERVICES

LOCATION	HOURS	DECK
Explorations Café	8a-10p	5
Fitness Center	5a-9p	8
Future Cruise Consultants	5p-8p	5
Greenhouse Spa & Salon	8a-9p	8
Location Guide	5p-6p	5
Medical Center	8a-12n, 2p-6p	1
Doctor's Hours	8a-9a, 5p-6p	
Photo Gallery	7p-10p	4
Pools & Hot Tubs	7a-10p	8
Shore Excursions Desk	5p-6p	4
Signature Shops	6p-10:30p	5

PHOTO GALLERY

Need Help with Your Camera?

*Stop by the Photo Gallery and ask our
friendly Image Creators for assistance
with any questions you may have about
your camera. SD Memory Cards and
image transfer to CDs are also available.*

6:00pm - 10:00pm

Photo Gallery, 4

SIGNATURE SHOPS

Links of Luxury

*Chains custom-made by the inch, set in
either 18k layered gold or sterling silver.
Starting from \$1 per inch.*

6:00pm - 8:00pm

Signature Shops, 5

FUTURE CRUISES

Are You a Canal Collector?

*If you enjoy seeing the world's greatest
canals, set sail on a 14-day cruise through
the Kiel Canal on ms Prinsendam. Two
voyages in 2017 departing May 20 (Kiel
Canal and Norway Explorer) and July 1
(Baltic and Kiel Canal Explorer). Book
now with a \$100 deposit per person and
receive double shipboard credit. See
Future Cruise Consultants Michael and
Joanne for details.*

5:00pm - 8:00pm

Future Cruises Desk, 5 aft