

MONDAY, FEBRUARY 1, 2016

Day 27

Forecast: Chance of Rain

Temperature: 25°C / 77°F

Sunrise / Sunset: 6:42am / 8:31pm

Dress Code: Smart Casual

Arrival: 7:00am

Last Tender: 4:30pm

WELCOME TO
WAITANGI,
(BAY OF ISLANDS)
NEW ZEALAND

Bringing the cultures, tastes and unique Holland America Line experiences to life, both on board and off.

Today's highlights include:

Going Ashore

An original valid government issued photo ID, such as a driver's license, is required for all guests wishing to go ashore in New Zealand. Photo copies of government issued photo IDs will not be accepted.

New Zealand Quarantine Regulations

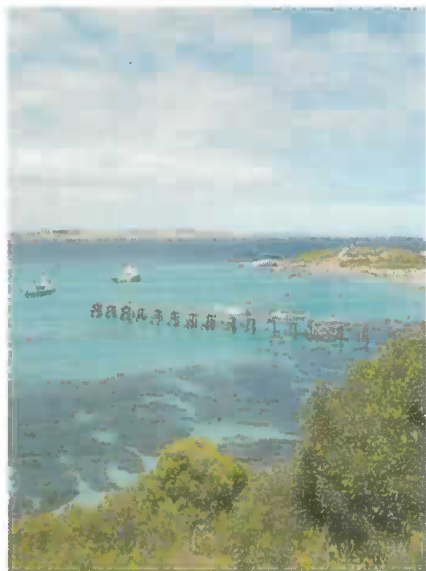
Do not remove from the ship fresh fruit, vegetables, meat, prepared meals (including sandwiches), dairy products, other consumable food item, flowers, seeds or plants. Only commercially bottled drinking water is permitted to leave the vessel. Quarantine Officers will check wooden items, items made of plants/plant material, shells, coral, animal products, nuts, seeds and shoes of guests who have been in high-risk areas. New Zealand Officials may impose on-the-spot fines to guests for breaches of these quarantine laws.

Waitangi Sailaway

4:30pm - 5:30pm

LIDO, 8 AFT

Join us for music, hot appetizers and drinks as we ring the bell and bid farewell to Waitangi. Sail away in style with our refreshing Waitangi Mint Cooler drink special. (*Alternative location due to weather, Crow's Nest, 9*)



Shuttle Service

The local Port Authority offers a complimentary shuttle service, taking guests from the ship to the Town Center and back. The shuttle ride is approximately 20 minutes each way. Shuttle service will run from 7:15am-4:00pm. Shuttle buses are operated by a non-Holland America Line service. Scheduling and timing of buses cannot be guaranteed.

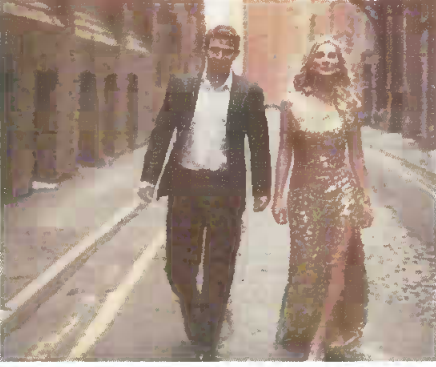
Limited Tender Services

Please be advised that our tender services today will be reduced due to the deficiency of one of our ship's tenders, and the unavailability of additional, logistically suitable, local tenders. We therefore expect each tender's turn-around time to approximately be 30 minutes. We apologize for the inconvenience that this may cause and thank you for your patience and understanding under these circumstances



Holland America Line

TONIGHT'S SHOW



Spotlight: La Musica

7:30pm

QUEEN'S LOUNGE, 4 & 5



Variety Showtime:

Bayne Bacon & Strings Alive

8:15pm & 10:00pm

QUEEN'S LOUNGE, 4 & 5

Back with
all new shows

MUSIC & LOUNGES

The Neptunes - 4:45pm-5:30pm,
6:15pm-8:00pm & 9:00pm-10:15pm
OCEAN BAR, 5
It's Music and Cocktails.

Oasis - 4:45pm-5:30pm, 7:00pm-
8:00pm, 9:00pm & 11:00pm
CROW'S NEST, 9
It's Music, Cocktails and Dancing.

Adagio - 6:00pm - 10:00pm
EXPLORER'S LOUNGE, 5
Our violin and piano duo performs
sophisticated classical music.

**Piano Bar Entertainer Debby
Bacon**
PIANO BAR, 5
7:00pm-The Grand Music of Michael
Legrand
9:15pm-The Grand Music of Michael
Legrand
10:00pm - Spontaneous Combustion
with Bobby Brooks Wilson



Amsterdam Nightclub
CROW'S NEST, 9
Show Host Erin
9:45pm - All Request
12:00mn - Late Night Grooves

SHORE EXCURSIONS



Waitangi, New Zealand

*Welcome to Waitangi, filled with beautiful landscapes
and rich culture! If you have booked an excursion today,
kindly check your tour ticket for the correct
departure time and meeting location.*

*For last minute tour bookings, check with Shore Excursions
in the Queen's Lounge from 7:45am - 8:45am.*

Enjoy your day ashore!

"AS YOU WISH"® DINING



Pinnacle
GRILL

Pacific Northwest Steak & Seafood in an intimate setting.
Promenade Deck, 4
Lunch: 12n-1p, \$10*
Dinner: 5:30p-9p, 29*



Canaletto

A taste of Italy featuring small plates for sharing.
Lido Deck, 8
Dinner: 5:30p-9p, \$10*



La Fontaine
RESTAURANT

A wide variety of options for breakfast, lunch and dinner in this classic setting with ocean views.
Promenade & Upper Promenade Decks, 4 & 5
Breakfast: 7:30a-9a, Deck 4
Lunch: 12n-1p, Deck 4
Dinner: Open Seating: 5:15p-9p, Fixed Seating 5:30p & 8p



Lido
restaurant

Our casual option for breakfast, lunch and dinner.
Lido Deck, 8
Breakfast Continental: 6a-11a
Breakfast Full Buffet: 6:30a-10:30a
Lunch: 11:30a-3p, Lido Deli/Pizza: 11:30a-5p
Dinner: 5:30p-8p
Late Night Snack: 10:30p-11:30p



DIVE IN

Signature burgers and hot dogs with a secret sauce.
Lido Deck, 8
Hours: 11:30a-5p

*Reservations for specialty restaurants can be made by dialing #3643.

AFTERNOON TEA TIME

Enjoy a relaxing cup of tea at our traditional afternoon tea in the La Fontaine Dining Room.
La Fontaine Dining Room, 4
3:00pm



Martini Flight

Have you tried our Grey Goose Martini flight in the Ocean Bar?

Sample our six Signature premier martinis, the most innovative and carefully crafted concoctions.
Happy "cocktailing!"

Available every day only
in the Ocean Bar, 5.

DRINKS

DRINK OF THE DAY
Waitangi Mint Cooler \$5.95

LOCATION	HOURS	HAPPY HOUR	
		HOUR	DECK
Explorations Café	7a-10p	—	5
Lido Bar	9a-9p	—	8
Ocean Bar	10a-12:30a	4p-5p 6p-7p	5
Sea View Bar	9a-11p	—	8
Crow's Nest	3:30p-close	4p-5p 6p-7p 9p-10p	9
Casino Bar	4:30p-close	—	5
Piano Bar	7p-close	—	5
Explorer's Lounge	5p-10:30p	—	5

Happy Hour: Buy 1 Drink, Get the 2nd Same Drink for \$1.
For Select Beverages Only

Tender Process

Guests wishing to go ashore today will do so by tenders. The duration of the tender ride is approximately 15 minutes. We will feature combined seating per tender to best offer tender services to *independent guests* (either with a tender ticket or through their priority tender service) and to those *guests on Holland America Line Shore Excursions*. Access to the tender area on A Deck forward will only be via the forward staircase from Deck 1 to A Deck. Please note that only one of the forward elevators will be in operation to A Deck, solely to transport guests with mobility assistance needs. Access from Deck 1 to A Deck will be supervised by our staff for safety reasons, and, the tender process is subject to change based on local conditions.

Mobility Assistance

Guests requiring mobility assistance (canes, walkers, wheel chairs, or scooters) are advised that today's tender operation both alongside the ship and shore side may present challenges. Please note that you must be able to walk under your own power to access the tenders through A Deck forward. Mobility devices, except those which can be lifted by a single person, will not be facilitated nor embarked at that tender gangway for logistical reasons, as well as for the safety of those involved providing that assistance. Separate advance inquiries will need to be made for those guests via the Front Office.

Guests Booked On a Morning HAL Shore Excursion

Please follow the information on your Shore Excursions ticket(s). Enter the Queen's Lounge, 4, on the starboard side and remain in the lounge until your tour is called to depart.

Guests Not Booked On a Morning HAL Shore Excursion

Tender tickets will be available starting at 8:00am. Once you are completely ready to go ashore, proceed to the entrance of the Wajang Theater, 4, to collect a tender ticket from one of the Location Team members. Please remain in public areas until your tender ticket number has been called via the PA system. Do not approach the gangway area until your tender ticket has been called.

President's Club, 5 and 4 star Mariner, Pinnacle and Neptune Suite Guests Not Booked on a HAL Shore Excursion

If you plan to go ashore independently before "open tendering", you are not required to collect a tender ticket and may proceed directly to the forward gangway. When you reach that area, simply identify yourself by showing your guest ID to verify your status and you will be directed to the soonest available tender.

<input type="checkbox"/> 6:30am	ON LOCATION Welcome to New Zealand Join your Maori Location Team for a traditional welcome with music and traditional dance as the Amsterdam arrives to Waitangi (<i>Alternative location due to weather, Crow's Nest, 9</i>)	Bow, 4 fwd
<input type="checkbox"/> 7:00am	ON LOCATION Ask Your Location Guide Barbara Meet Barbara for last minute questions on the pier.	Pier
<input type="checkbox"/> 7:00am	Fitness Class: Early Morning Stretch	Fitness Center, 8
<input type="checkbox"/> 7:30am	Fitness Class: Fab Abs	Fitness Center, 8
<input type="checkbox"/> 8:00am	ON LOCATION Waitangi Port Information A representative from the Paihia I-Site will be available with maps and to answer your questions	Atrium, 4
<input type="checkbox"/> 9:00am	Daily Quiz, Sudoku & Gene's Brainbusters Available	Explorations Café, 5
<input type="checkbox"/> 9:00am	Use Windows 10 Mail and Calendar Learn how to use the Mail app to organize and send email, and learn how to personalize the Calendar app to fit your lifestyle	Digital Workshop, 5
<input type="checkbox"/> 10:00am	Open Wii Challenge	Crow's Nest, 9
<input type="checkbox"/> 10:00am	Card/.Bridge Players Meet	Hudson Room, 5
<input type="checkbox"/> 2:00pm	Basketball Players Meet	Sports Court, 9 starboard
<input type="checkbox"/> 2:00pm	Card/Bridge Players Meet	Hudson Room, 5



□ 3:00pm	Pickle Ball Players Meet	Sports Court, 9
□ 3:00pm	Afternoon Tea Time	Dining Room, 4
□ 3:00pm	Chess Players Meet	Explorations Café, 5
□ 3:30pm	Cooking Demo: Candy Making with Culinary Arts Center Host Donna	Culinary Arts Center, 4
□ 4:00pm	Express Team Trivia Challenge with Cruise Director Gene	Ocean Bar, 5
□ 4:00pm	Friends of Bill W. Meet	The Loft, 9
□ 4:30pm	Use Windows 10 Mail and Calendar Learn how to use the Mail app to organize and send email, and learn how to personalize the Calendar app to fit your lifestyle	Digital Workshop, 5
□ 4:30pm	Foodie Fight: Culinary Trivia Challenge with Donna	Piano Bar, 5
□ 4:30pm-5:30pm	ON LOCATION Waitangi Sailaway Join us for music, hot appetizers and drinks as we ring the bell and bid farewell to Waitangi. Sail away in style with our refreshing Waitangi Mint Cooler drink special. (<i>Alternative location due to weather, Crow's Nest, 9</i>)	Lido Poolside, 8
□ 5:00pm	Mass is Celebrated with Father Louis	Wajang Theater, 4
□ 5:00pm	Fitness Class: Total Body Conditioning	Fitness Center, 8
□ 5:00pm	Pub Trivia with Show Host Erin	Piano Bar, 5
□ 5:00pm - 6:00pm	ON LOCATION Ask Your Location Guide Location Guide Barbara is available to answer your questions about our upcoming ports of call	Explorations Café, 5
□ 5:30pm	Q&A with your Digital Workshop Host Your Digital Workshop Host, Kristin, is available and ready to answer your questions about Windows 10	Digital Workshop, 5
□ 7:00pm	The Grand Music of Michael Legrand with Debby Bacon	Piano Bar, 5
□ 7:30pm	Spotlight Showtime: La Musica	Queen's Lounge, 4 & 5
□ 7:30pm	Single and Solos Meet for the Show with Culinary Arts Center Host Donna	Crow's Nest, 9
□ 8:15pm	VARIETY SHOWTIME: Bayne Bacon and Strings Alive	Queen's Lounge, 4 & 5
□ 8:30pm - 10:00pm	Caribbean Stud & Three Card Poker Highest Hand Competition Win great Casino prizes and Canaletto dinner	Casino, 5
□ 9:00pm	Texas Hold'em Cash Game \$1/\$2 No Limit	Casino, 5
□ 9:00pm	Cigars and Cognacs Under the Stars (Unhosted)	Lido, 8 aft
□ 9:15pm	The Grand Music of Michael Legrand with Debby Bacon	Piano Bar, 5
□ 9:45pm	All Request with Show Host Erin	Crow's Nest, 9
□ 10:00pm	VARIETY SHOWTIME: Bayne Bacon and Strings Alive	Queen's Lounge, 4 & 5
□ 10:00pm	Spontaneous Combustion with Bobby Brooks Wilson and Piano Bar Entertainer Debby Bacon	Piano Bar, 5
□ 12:00mn	Late Night Grooves with Show Host Erin	Crow's Nest, 9

TODAY'S MOVIE

The Surprise

1:00pm · 6:15pm · 8:00pm · 10:00pm

WAJANG THEATER, 4

Starring: Joroen Van Koingsbrugge and Georgina Verbaan

Rated R · 1 hour & 42 minutes

An eccentric multimillionaire signs an agreement to have his life ended. While selecting his coffin he meets a young woman who has signed up for the same arrangement.

This movie will replay on your stateroom televisions tomorrow

SERVICES

LOCATION	HOURS	DECK
Explorations Café	8a-10p	5
Fitness Center	5a-9p	8
Future Cruise Consultants	4p-7p	5
Greenhouse Spa & Salon	8a-9p	8
Location Guide	5p-6p	5
Medical Center	8a-12n, 2p-6p	1
Doctor's Hours	8a-9a, 5p-6p	
Photo Gallery	6p-10p	4
Pools & Hot Tubs	7a-10p	8
Shore Excursions Desk	4p-6p	4
Signature Shops	8p-10:30p	5

ONBOARD OPPORTUNITIES

FUTURE CRUISES

2017 Grand Asia Voyage

We are pleased to confirm that there will indeed be a Grand Asia Voyage in Fall 2017. If you're interested in this itinerary, we recommend purchasing your Future Cruise Deposit for \$100 per person to be on the priority list. You'll be contacted prior to the itinerary being opened to the public and will have first choice on your preferred stateroom. The itinerary has not been finalized, but will hopefully be released before the end of our World Voyage.

4:00pm - 7:00pm
Future Cruises Desk, 5 aft

SIGNATURE SHOPS

Coming Soon: Wild Jewels Trunk Show
Featuring sterling silver, New Zealand Paua, Mother of Pearl, semi-precious stones, and freshwater pearls.
Signature Shops, 5

PHOTO GALLERY

Port Memories

Stare the day with a smile! Our friendly Image Creators will be on the pier to take your pictures as you set out to explore Waitangi.

8:00am - 10:30am
Pier Ashore

CASINO

Casino Opens approximately 8:00pm
Caribbean Stud & Three Card Poker Highest Hand Competition Join us for a night of Caribbean Stud and Three Card Poker. The highest hand by 10:00pm wins great Casino prizes, including Canaletto dinner for two.

8:30pm - 10:00pm
Texas Hold'em Cash Game \$1/\$2 No Limit. Players meet at the table. 9:00pm
Casino, 5

MERABELLA LUXURY BOUTIQUE

Your Once-In-A-Lifetime Special Purchase
Visit Merabella Manager Cengiz, your onboard gem and jewelry specialist, to experience our collections and take home a memory from your 2016 Grand World Voyage.

8:00pm - 10:00pm
Merabella Luxury Boutique, 5



THE GREENHOUSE
SPA & SALON

TODAY'S SPA SPECIAL

Aroma Flex

50 minutes of pure indulgence:

Enjoy a 25-minute back massage and a 25-minute hydrating facial.

Today only \$99
Normally \$119

Visit the Greenhouse Spa, 8,
or dial 94 to schedule an appointment.